

Recombinant Bovine Prolactin Protein, His-Tagged

Cat. No. PRL-298B Lot. No. (See product label)

SPECIFICATION

Product Overview	Recombinant Bovine PRL Protein, His-Tagged was expressed in E.coli cell
Species	Bovine
Source	E.coli
ProteinLength	31-229 a.a.
Description	Prolactin (PRL), also known as lactotropin, is a protein best known for its role in enabling mammals to produce milk. It is influential in over 300 separate processes in various vertebrates, including humans.[5] Prolactin is secreted from the pituitary gland in response to eating, mating, estrogen treatment, ovulation and nursing. It is secreted heavily in pulses in between these events.
Molecular Mass	The protein has a calculated MW of 24 kDa.
AA Sequence	MGSSHHHHHTPVCPNGPGNCQVSLRDLFDRAVMVSHYIHDLSSSEMNFNEFDKRYA QGKGFITMALNSCHTSSLPTPEDKEQAQQTHHEVLMSLILGLLRSWNDPLYHLVTEV RGMKGAPDAILSRAIEIEEENKRLLEGMEMIFGQVIPGAKETEPYPVWSGLPSLQTKD EDARYSAFYNLLHCLRRDSSKIDTYLKLLNCRIIYNNNC
Purity	90% by SDS-PAGE
Storage	Store it under sterile conditions at -20 to -80 °C. It is recommended that the protein be aliquoted for optimal storage. Avoid repeated freeze-thaw cycles.

 Tel: 1-631-559-9269 1-516-512-3133

 Email: info@creative-biomart.com  Fax: 1-631-938-8127

 45-1 Ramsey Road, Shirley, NY 11967, USA

Concentration 0.19 mg/ml

Storage Buffer 50mM Tris, 300mM NaCl, pH 8.0

GENE INFORMATION

Gene Name PRL prolactin [Bos taurus (cattle)]

Official Symbol PRL

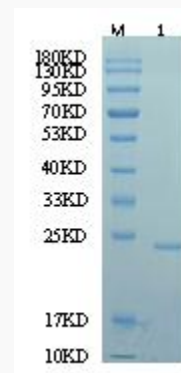
Synonyms GHA1; Prol

Gene ID 280901

mRNA Refseq NM_173953.2

Protein Refseq NP_776378.2

UniProt ID P01239

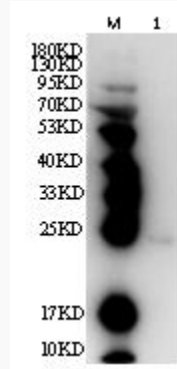


Reducing 12% SDS-PAGE and WB analysis profiles of purified PRL(CBB stained)

Tel: 1-631-559-9269 1-516-512-3133

Email: info@creative-biomart.com Fax: 1-631-938-8127

45-1 Ramsey Road, Shirley, NY 11967, USA



Reducing 12% SDS-PAGE and WB analysis profiles of purified PRL(CBB stained)

 Tel: 1-631-559-9269 1-516-512-3133

 Email: info@creative-biomart.com  Fax: 1-631-938-8127

 45-1 Ramsey Road, Shirley, NY 11967, USA