

Recombinant Human PRL protein, His-tagged

Cat. No. PRL-459H **Lot. No.** (See product label)

SPECIFICATION

Product Overview	Recombinant Human PRL (P01236) aa. (Leu29~Cys227) fused with His tag was produced in HEK293F cells.
Species	Human
Source	HEK293
ProteinLength	Leu29~Cys227
Description	This gene encodes the anterior pituitary hormone prolactin. This secreted hormone is a growth regulator for many tissues, including cells of the immune system. It may also play a role in cell survival by suppressing apoptosis, and it is essential for lactation. Alternative splicing results in multiple transcript variants that encode the same protein.
Form	Freeze-dried powder
Molecular Mass	Predicted Molecular Mass: 23.4kDa; Accurate Molecular Mass: 24&28kDa as determined by SDS-PAGE reducing conditions.
Endotoxin	<1.0EU per 1ug (determined by the LAL method)
Purity	> 95%
Characteristic	Isoelectric point is 6.2.

 Tel: 1-631-559-9269 1-516-512-3133

 Email: info@creative-biomart.com  Fax: 1-631-938-8127

 45-1 Ramsey Road, Shirley, NY 11967, USA

Applications	SDS-PAGE; WB; ELISA; IP; CoIP; EMSA; Reporter Assays; Purification; Amine Reactive Labeling
Stability	The thermal stability is described by the loss rate. The loss rate was determined by accelerated thermal degradation test, that is, incubate the protein at 37°C for 48h, and no obvious degradation and precipitation were observed. The loss rate is less than 5% within the expiration date under appropriate storage condition.
Storage	Avoid repeated freeze/thaw cycles. Store at 2-8°C for one month. Aliquot and store at -80°C for 12 months.
Concentration	200ug/mL
Storage buffer	20mM Tris, 150mM NaCl, pH8.0, containing 1mM EDTA, 1mM DTT, 5% Trehalose and Proclin300.
Reconstitution	Reconstitute in 20mM Tris, 150mM NaCl (pH8.0) to a concentration of 0.1-1.0 mg/mL. Do not vortex

GENE INFORMATION

Gene Name	PRL prolactin [Homo sapiens (human)]
Official Symbol	PRL
Synonyms	PRL; prolactin; GHA1; decidual prolactin; growth hormone A1
Gene ID	5617
mRNA Refseq	NM_000948.5

 Tel: 1-631-559-9269 1-516-512-3133

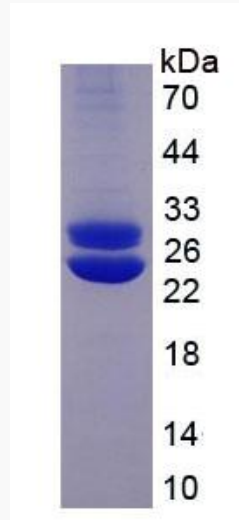
 Email: info@creative-biomart.com  Fax: 1-631-938-8127

 45-1 Ramsey Road, Shirley, NY 11967, USA

Protein Refseq NP_000939.1

UniProt ID P01236

SDS-PAGE



 Tel: 1-631-559-9269 1-516-512-3133

 Email: info@creative-biomart.com  Fax: 1-631-938-8127

 45-1 Ramsey Road, Shirley, NY 11967, USA