

Recombinant Pig PRL Protein (31-229 aa), His-SUMO-tagged

Cat. No. PRL-741P Lot. No. (See product label)

SPECIFICATION

Product Overview	Recombinant Pig PRL Protein (31-229 aa) is produced by E. coli expression system. This protein is fused with a 6xHis-SUMO tag at the N-terminal. Research Area: Signal Transduction. Protein Description: Partial.
Species	Pig
Source	E.coli
ProteinLength	31-229 aa
Description	Prolactin acts primarily on the mammary gland by promoting lactation.
Form	Tris-based buffer, 50% glycerol
Molecular Mass	39.0 kDa
AA Sequence	LPICPSGAVNCQVSLRDLFDRAVILSHYIHNLSSEMFNEFDKRYAQGRGFITKAINSC HTSSLSTPEDKEQAQQIHHEVLLNLILRVLRSWNDPLYHLVTEVRGMQEAPDAILSR AIEIEEQNKRLLEGMEKIVGQVHPGIKENEVYSVWVWGLPSLQMADEDTRLFAFYLL HCLRRDSHKIDNYLKLLKCRIIYDSNC
Purity	> 90% as determined by SDS-PAGE.
Notes	Repeated freezing and thawing is not recommended. Store working aliquots at 4 centigrade for up to one week.

 Tel: 1-631-559-9269 1-516-512-3133

 Email: info@creative-biomart.com  Fax: 1-631-938-8127

 45-1 Ramsey Road, Shirley, NY 11967, USA

Storage

The shelf life is related to many factors, storage state, buffer ingredients, storage temperature and the stability of the protein itself. Generally, the shelf life of liquid form is 6 months at -20 centigrade/-80 centigrade. The shelf life of lyophilized form is 12 months at -20 centigrade/-80 centigrade.

Concentration

A hardcopy of COA with concentration instruction is sent along with the products.

GENE INFORMATION

Gene Name PRL prolactin [*Sus scrofa*]

Official Symbol PRL

Synonyms PRL; prolactin;

Gene ID 396965

mRNA Refseq NM_213926

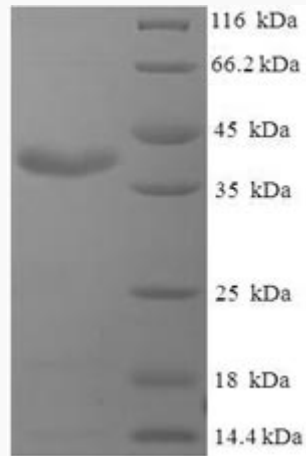
Protein Refseq NP_999091

UniProt ID P01238

 Tel: 1-631-559-9269 1-516-512-3133

 Email: info@creative-biomart.com  Fax: 1-631-938-8127

 45-1 Ramsey Road, Shirley, NY 11967, USA



(Tris-Glycine gel) Discontinuous SDS-PAGE (reduced) with 5% enrichment gel and 15% separation gel.

 Tel: 1-631-559-9269 1-516-512-3133

 Email: info@creative-biomart.com  Fax: 1-631-938-8127

 45-1 Ramsey Road, Shirley, NY 11967, USA