

## Recombinant Bovine PRL protein, His-tagged

Cat. No. PRL-96B Lot. No. (See product label)

### SPECIFICATION

<b>Product Overview</b>	Recombinant Bovine PRL protein, fused to His-tag, was expressed in E. coli.
<b>Species</b>	Bovine
<b>Source</b>	E.coli
<b>Description</b>	This gene encodes the anterior pituitary hormone prolactin. This secreted hormone is a growth regulator for many tissues, including cells of the immune system. It may also play a role in cell survival by suppressing apoptosis, and it is essential for lactation. Alternative splicing results in multiple transcript variants that encode the same protein.
<b>Form</b>	50mM Tris, 300mM NaCl, pH 8.0.
<b>Molecular Mass</b>	24 kDa
<b>AA Sequence</b>	MGSSHHHHHTPVCPNGPGNCQVSLRDLFDRAVMVSHYIHDLSSEMFNEFDKRYA QGKGFITMALNSCHTSSLPTPEDKEQAQQTHHEVLMSLILGLLRSWNPPLYHLVTEV RGMKGAPDAILSRAIEIEEENKRLLEGMEMIFGQVIPGAKETEPYPVWSGLPSLQTKD EDARYSAFYNLLHCLRRDSSKIDTYLKLLNCRIIYNNNC
<b>Purity</b>	>90%
<b>Storage</b>	Store it under sterile conditions at -20 to -80 centigrade. It is recommended that the protein be aliquoted for optimal storage. Avoid repeated freeze-thaw cycles.

 Tel: 1-631-559-9269 1-516-512-3133

 Email: [info@creative-biomart.com](mailto:info@creative-biomart.com)  Fax: 1-631-938-8127

 45-1 Ramsey Road, Shirley, NY 11967, USA

**Concentration** 0.25 mg/ml

## GENE INFORMATION

**Gene Name** PRL prolactin [ Bos taurus (cattle) ]

**Official Symbol** PRL

**Synonyms** GHA1

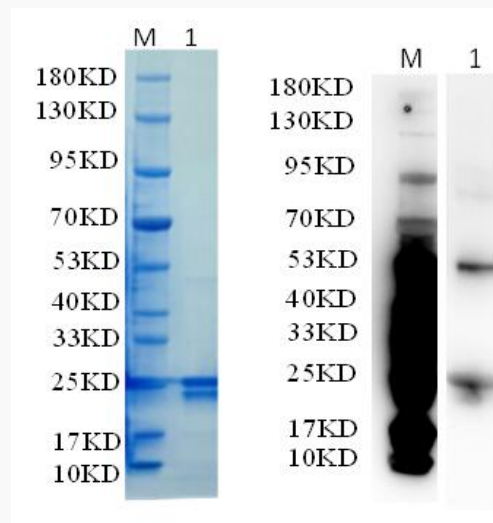
**Gene ID** 280901

**mRNA Refseq** NM\_173953

**Protein Refseq** NP\_776378

**UniProt ID** P01239

## SDS-PAGE



Tel: 1-631-559-9269 1-516-512-3133

Email: [info@creative-biomart.com](mailto:info@creative-biomart.com) Fax: 1-631-938-8127

45-1 Ramsey Road, Shirley, NY 11967, USA



Reducing 12% SDS-PAGE and WB analysis profile of purified PRL(CBB stained).

 Tel: 1-631-559-9269 1-516-512-3133

 Email: [info@creative-biomart.com](mailto:info@creative-biomart.com)  Fax: 1-631-938-8127

 45-1 Ramsey Road, Shirley, NY 11967, USA