

Recombinant Mouse PRL3D1 Protein (30-224 aa), His-tagged

Cat. No. PRL3D1-2315M Lot. No. (See product label)

SPECIFICATION

Product Overview	Recombinant Mouse PRL3D1 Protein (30-224 aa) is produced by E. coli expression system. This protein is fused with a 6xHis tag at the N-terminal. Protein Description: Full Length of Mature Protein.
Species	Mouse
Source	E.coli
ProteinLength	30-224 aa
Form	Tris-based buffer,50% glycerol
Molecular Mass	26.4 kDa
AA Sequence	SKPTAMVPTEDLYTRLAELLHNTFILAADVREFDLDFDKTWITDRTLPLCHTASIHT PENREEVHETKTEDLLKAMINVSISWKEPLKHLVSALTALPGASESMGKKAADIKGR NLVILEGLQTIYNRSQANIEENENFDYPAWGLEELQSPNEDTHLFAVYNLCRCIKRD IHKIDSYIKVLRRCRVVFQNEC
Purity	> 85% as determined by SDS-PAGE.
Notes	Repeated freezing and thawing is not recommended. Store working aliquots at 4 centigrade for up to one week.
Storage	The shelf life is related to many factors, storage state, buffer ingredients, storage

 Tel: 1-631-559-9269 1-516-512-3133

 Email: info@creative-biomart.com  Fax: 1-631-938-8127

 45-1 Ramsey Road, Shirley, NY 11967, USA

temperature and the stability of the protein itself. Generally, the shelf life of liquid form is 6 months at -20 centigrade/-80 centigrade. The shelf life of lyophilized form is 12 months at -20 centigrade/-80 centigrade.

Concentration

A hardcopy of COA will be sent along with the products. Please refer to it for detailed information.

GENE INFORMATION

Gene Name [Prl3d1 prolactin family 3, subfamily d, member 1 \[Mus musculus \]](#)

Official Symbol [PRL3D1](#)

Synonyms PRL3D1; prolactin-3D1; prolactin-like 2; placental lactogen 1; PI1; Csh1; PL-I; PI-1; PL-Ia; mPL-I; AI325057; PL-I-alpha; MGC76481;

Gene ID [18775](#)

mRNA Refseq [NM_001205322](#)

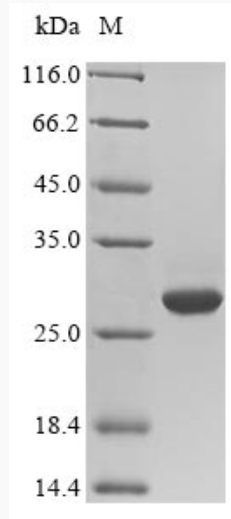
Protein Refseq [NP_001192251](#)

UniProt ID [P18121](#)

 Tel: 1-631-559-9269 1-516-512-3133

 Email: info@creative-biomart.com  Fax: 1-631-938-8127

 45-1 Ramsey Road, Shirley, NY 11967, USA



(Tris-Glycine gel) Discontinuous SDS-PAGE (reduced) with 5% enrichment gel and 15% separation gel.

 Tel: 1-631-559-9269 1-516-512-3133

 Email: info@creative-biomart.com  Fax: 1-631-938-8127

 45-1 Ramsey Road, Shirley, NY 11967, USA