

Recombinant Human PRLH Protein, Myc/DDK-tagged, C13 and N15-labeled

Cat. No. PRLH-6358H **Lot. No.** (See product label)

SPECIFICATION

Product Overview	PRLH MS Standard C13 and N15-labeled recombinant protein (NP_056977) with a C-terminal MYC/DDK tag, was expressed in HEK293 cells.
Species	Human
Source	HEK293
Description	Stimulates prolactin (PRL) release and regulates the expression of prolactin through its receptor GPR10. May stimulate lactotrophs directly to secrete PRL.
Molecular Mass	9.6 kDa
AA Sequence	MKVLRAWLLCLLMLGLALRGAASRTHRHSMEIRTPDINPAWYASRGIRPVGRFRGR RATLGDVVPKPLRPRLTCFPLEGGAMSSQDGTRTRPLEQKLISEEDLAANDILDYKD DDDKV
Purity	> 80% as determined by SDS-PAGE and Coomassie blue staining
Stability	Stable for 3 months from receipt of products under proper storage and handling conditions.
Storage	Store at -80 centigrade. Avoid repeated freeze-thaw cycles.
Concentration	50 µg/mL as determined by BCA

 Tel: 1-631-559-9269 1-516-512-3133

 Email: info@creative-biomart.com  Fax: 1-631-938-8127

 45-1 Ramsey Road, Shirley, NY 11967, USA

Storage Buffer 100 mM glycine, 25 mM Tris-HCl, pH 7.3.

GENE INFORMATION

Gene Name PRLH prolactin releasing hormone [Homo sapiens (human)]

Official Symbol PRLH

Synonyms PRLH; prolactin releasing hormone; prolactin-releasing peptide; PRH; prolactin-releasing hormone; preproprolactin-releasing peptide; PRRP;

Gene ID 51052

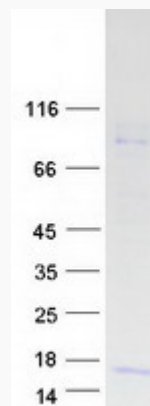
mRNA Refseq NM_015893

Protein Refseq NP_056977

MIM 602663

UniProt ID P81277

SDS-PAGE



 Tel: 1-631-559-9269 1-516-512-3133

 Email: info@creative-biomart.com  Fax: 1-631-938-8127

 45-1 Ramsey Road, Shirley, NY 11967, USA