

Recombinant Human Prolactin Receptor / PRLR protein, His-tagged

Cat. No. PRLR-2060H Lot. No. (See product label)

SPECIFICATION

Product Overview

Recombinant Human PRLR (Gln25-Asp234) protein was fused to His-tag at C-terminus and expressed in human 293 cells (HEK293).

Species

Human

Source

HEK293

ProteinLength

25-234 a.a.

Description

As a transmembrane receptor, the prolactin receptor (PRL-R) interacts with prolactin. In addition, the PRL-R also binds and is activated by growth hormone (GH) and human placental lactogen (hPL). Preclinical investigations, epidemiological studies and analyses of tissue specimens from patients strongly support the contribution of prolactin receptor (PRLR) signaling to breast and prostate tumorigenesis and cancer progression. Moreover, The PRLR has been found to be essential for lobuloalveolar maturation of the mammary glands during pregnancy, as evidenced by the fact that PRLR knockout mice show severely impaired development of lobuloalveolar structures.

Predicted N Terminal

Gln25

Form

Lyophilized from 0.22 µm filtered solution in 50 mM Tris, 150 mM NaCl, pH7.5 , 10% trehalose.

 Tel: 1-631-559-9269 1-516-512-3133

 Email: info@creative-biomart.com  Fax: 1-631-938-8127

 45-1 Ramsey Road, Shirley, NY 11967, USA

Molecular Mass	The protein has a calculated MW of 26.3 kDa. The protein migrates as 35-40 kDa under reducing (R) condition (SDS-PAGE) due to glycosylation.
Endotoxin	Less than 1.0 EU per µg by the LAL method.
Purity	>95% as determined by SDS-PAGE.
Storage	For long term storage, the product should be stored at lyophilized state at -20 centigrade or lower. Please avoid repeated freeze-thaw cycles. This product is stable after storage at: -20 to -70 centigrade for 12 months in lyophilized state; -70 centigrade for 3 months under sterile conditions after reconstitution.
Reconstitution	It is recommended that sterile water be added to the vial to prepare a stock solution of 0.2 ug/ul. Centrifuge the vial at 4°C before opening to recover the entire contents.

GENE INFORMATION

Gene Name	PRLR
Official Symbol	PRLR
Synonyms	PRLR; prolactin receptor; PRL-R; hPRL receptor; secreted prolactin binding protein; hPRLrl
Gene ID	5618
mRNA Refseq	NM_000949
Protein Refseq	NP_000940

 Tel: 1-631-559-9269 1-516-512-3133

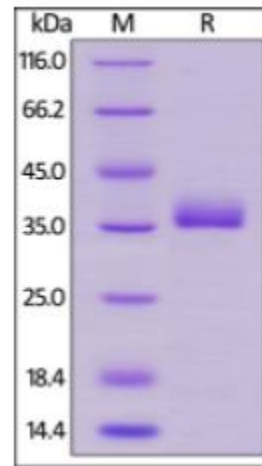
 Email: info@creative-biomart.com  Fax: 1-631-938-8127

 45-1 Ramsey Road, Shirley, NY 11967, USA

MIM 176761

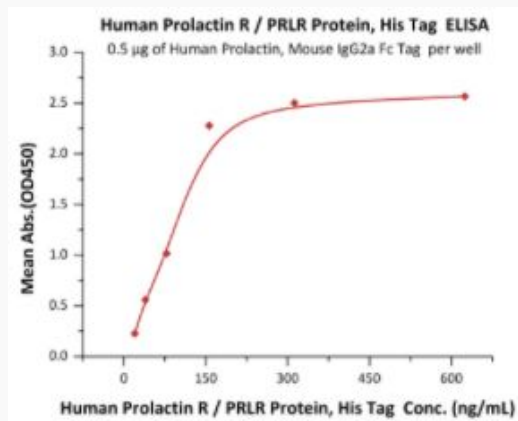
UniProt ID P16471

SDS-PAGE of PRLR-2060H



Human Prolactin R / PRLR Protein, His Tag on SDS-PAGE under reducing (R) condition. The gel was stained overnight with Coomassie Blue. The purity of the protein is greater than 95%.

Bioactivity-ELISA of PRLR-2060H



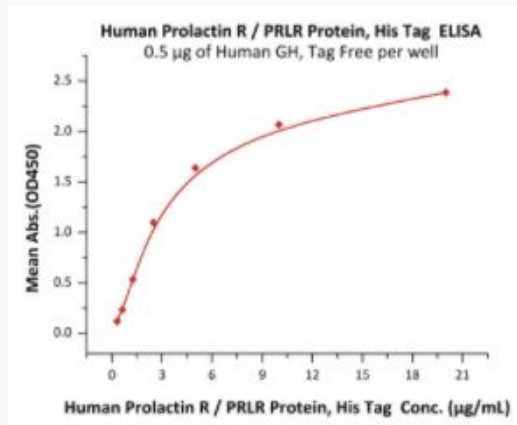
Tel: 1-631-559-9269 1-516-512-3133

Email: info@creative-biomart.com Fax: 1-631-938-8127

45-1 Ramsey Road, Shirley, NY 11967, USA

Immobilized Human Prolactin, Mouse IgG2a Fc Tag, low endotoxin at 5 µg/mL (100 µL/well) can bind Human Prolactin R, His Tag with a linear range of 20-156 ng/mL (QC tested).

Bioactivity-ELISA



Immobilized Human GH, Tag Free at 5 µg/mL (100 µL/well) can bind Human Prolactin R, His Tag with a linear range of 0.313-5 µg/mL (Routinely tested).

Tel: 1-631-559-9269 1-516-512-3133

Email: info@creative-biomart.com Fax: 1-631-938-8127

45-1 Ramsey Road, Shirley, NY 11967, USA