

Recombinant Human PRLR Full Length Transmembrane protein, His&Myc-tagged

Cat. No. PRLR-2391H Lot. No. (See product label)

SPECIFICATION

Product Overview	Recombinant Human PRLR protein(P16471)(25-622aa), fused to N-terminal His tag and C-terminal Myc tag, was expressed in E. coli.
Species	Human
Source	E.coli
ProteinLength	25-622aa
Form	<p>If the delivery form is liquid, the default storage buffer is Tris/PBS-based buffer, 5%-50% glycerol.</p> <p>If the delivery form is lyophilized powder, the buffer before lyophilization is Tris/PBS-based buffer, 6% Trehalose, pH 8.0.</p>
Molecular Mass	71.9kDa
AA Sequence	<p>QLPPGKPEIFKCRSPNKETFTCWWRPGTDGGLPTNYSLTYHREGETLMHECPDYIT GGPNSCHFGKQYTSMWRTYIMMVNATNQMGSSFSDELYVDVTYIVQPDPPLLELAV EVKQPEDRKPYLWIKWSPPTLIDLKTGWFTLLYEIRLKPEKAAEWEIHFAGQQTEFKI LSLHPGQKYLQVRCKPDHGYWSAWSPATFIQIPSDFTMNDTTVWISVAVLSAVICLI IVWAVALKGYSMVTCIFPPVPGPKIKGFD AHLLEK GKSE ELLSALGCQDFPPTSDYE DLLVEYLEVDDSEDQHLMSVHSKEHPSQGMKPTYLDPDTDSGRGSCDSPSLLSEK CEEPQANPSTFYDPEVIEKPENPETHTWDPQCISMEGKIPYFHAGGSKCSTWPLP QPSQHNPSSYHNITDVCELA VG P A G A P A T L L N E A G K D A L K S S Q T I K S R E E G K A T Q</p>

Tel: 1-631-559-9269 1-516-512-3133

Email: info@creative-biomart.com Fax: 1-631-938-8127

45-1 Ramsey Road, Shirley, NY 11967, USA



QREVESFHSETDQDTPWLLPQEKT PFGSAKPLDYVEIHKVNKDGALSLLPKQRENS
GKPKKPGTPENNKEYAKVSGVMDNNILVLPDPHAKNVACFEESAKEAPPSLEQNQ
AEKALANFTATSSKRLQLGGLDYLDPACFTHSFH

Purity Greater than 85% as determined by SDS-PAGE.

Storage Store at -20°C/-80°C upon receipt, aliquoting is necessary for multiple use. Avoid repeated freeze-thaw cycles.

Reconstitution Please reconstitute protein in deionized sterile water to a concentration of 0.1-1.0 mg/mL. We recommend to add 5-50% of glycerol (final concentration) and aliquot for long-term storage at -20°C/-80°C. Our default final concentration of glycerol is 50%.

GENE INFORMATION

Gene Name PRLR prolactin receptor [Homo sapiens]

Official Symbol PRLR

Synonyms PRLR; prolactin receptor; PRL-R; hPRL receptor; secreted prolactin binding protein; hPRLrl;

Gene ID 5618

mRNA Refseq NM_000949

Protein Refseq NP_000940

MIM 176761

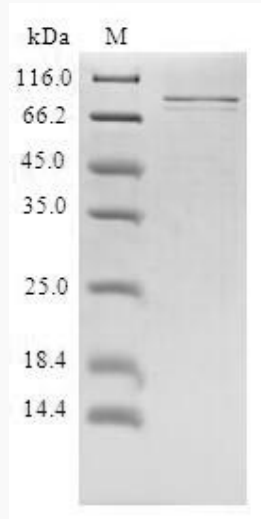
UniProt ID P16471

Tel: 1-631-559-9269 1-516-512-3133

Email: info@creative-biomart.com Fax: 1-631-938-8127

45-1 Ramsey Road, Shirley, NY 11967, USA

SDS-PAGE



 Tel: 1-631-559-9269 1-516-512-3133

 Email: info@creative-biomart.com  Fax: 1-631-938-8127

 45-1 Ramsey Road, Shirley, NY 11967, USA