

Active Recombinant Human PRLR protein, His-tagged

Cat. No. PRLR-2659H Lot. No. (See product label)

SPECIFICATION

Product Overview	Active Recombinant Human Prolactin receptor/PRL-R Protein is produced by HEK293 expression system. The target protein is expressed with sequence (Gln25-Asp234) of human PRLR/Prolactin Receptor (Accession #NP_000940.1) fused with a 6xHis tag at the C-terminus.
Species	Human
Source	HEK293
ProteinLength	Gln25-Asp234
Form	Lyophilized from a 0.22 µm filtered solution of PBS, pH 7.4.
Bio-activity	Measured by its binding ability in a functional ELISA. Immobilized Human PRLR/Prolactin Receptor at 1 µg/mL (100 µL/well) can bind Prolactin Receptor Rabbit mAb with a linear range of 0.67-3.45 ng/mL.
Molecular Mass	35 kDa
Endotoxin	< 0.1 EU/µg of the protein by LAL method.
Purity	> 97% by SDS-PAGE.
Storage	Store the lyophilized protein at -20°C to -80 °C for long term. After reconstitution, the protein solution is stable at -20 °C for 3 months, at 2-8 °C for

 Tel: 1-631-559-9269 1-516-512-3133

 Email: info@creative-biomart.com  Fax: 1-631-938-8127

 45-1 Ramsey Road, Shirley, NY 11967, USA



up to 1 week.

Reconstitution

Reconstitute to a concentration of 0.1-0.5 mg/mL in sterile distilled water.

GENE INFORMATION

Gene Name

PRLR prolactin receptor [Homo sapiens]

Official Symbol

PRLR

Synonyms

PRLR; prolactin receptor; PRL-R; hPRL receptor; secreted prolactin binding protein; hPRLrI;

Gene ID

5618

mRNA Refseq

NM_000949

Protein Refseq

NP_000940

MIM

176761

UniProt ID

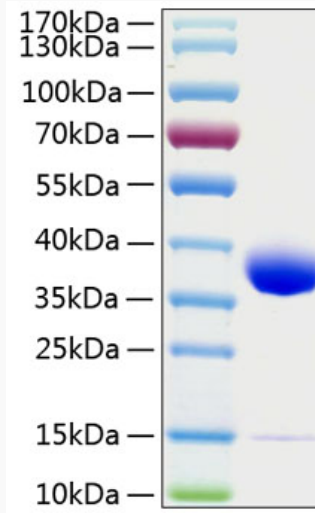
P16471

Tel: 1-631-559-9269 1-516-512-3133

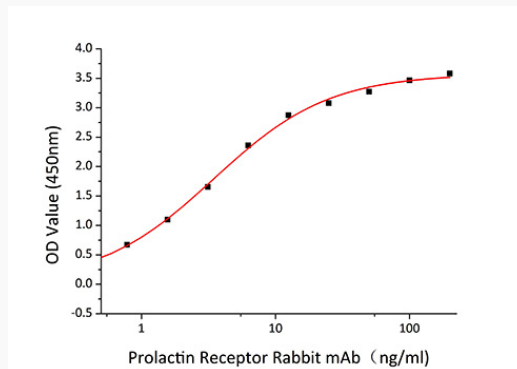
Email: info@creative-biomart.com Fax: 1-631-938-8127

45-1 Ramsey Road, Shirley, NY 11967, USA

SDS-PAGE



Bio-activity



 Tel: 1-631-559-9269 1-516-512-3133

 Email: info@creative-biomart.com  Fax: 1-631-938-8127

 45-1 Ramsey Road, Shirley, NY 11967, USA