

## Active Recombinant Human PRLR Homodimer Protein, His&Avi tagged

Cat. No. PRLR-54H Lot. No. (See product label)

### SPECIFICATION

<b>Product Overview</b>	PRLR dimer protein contains a PRLR extracellular domain (UniProt# P16471) fused with a proprietary dimer motif followed by a tandem His-Avi tag at the C-terminus was expressed in HEK293T.
<b>Species</b>	Human
<b>Source</b>	HEK293T
<b>ProteinLength</b>	25-234 aa
<b>Description</b>	<p>Human prolactin receptor (PRLR), also known as PRL-R, is a class 1 cytokine receptor glycoprotein that binds prolactin (PRL) as well as growth hormone (GH) and human placental lactogen (hPL). PRLR contains an extracellular domain with a cytokine homology module formed by two fibronectin type III domains, D1 and D2, followed by a transmembrane domain and cytoplasmic domain. PRLR is expressed on cells in mammary glands, pituitary gland, and other tissues. PRLR exists as a monomer and can form dimers. PRLR dimerization is a critical mechanism in PRL signaling, influencing numerous physiological and pathological processes. PRLR pathological dimerization, including constitutive or ligand-independent PRLR dimers sustain abnormal signaling, contributes to cancer, hyperprolactinemia, and immune dysfunction. Dysregulation of PRLR can promote tumor activity and positively regulate the proliferation of malignant cells in breast cancer. PRLR is an attractive therapeutic target for PRLR related diseases including breast cancer,</p>

 Tel: 1-631-559-9269 1-516-512-3133

 Email: [info@creative-biomart.com](mailto:info@creative-biomart.com)  Fax: 1-631-938-8127

 45-1 Ramsey Road, Shirley, NY 11967, USA

hyperprolactinemia, and metabolic disorders. The recombinant dimeric protein mimicking the PRLR structural dynamics may offer better immunogen and antigen to develop precision-targeted therapeutics with fewer side effects.

<b>Molecular Mass</b>	69 kDa
<b>Purity</b>	Greater than 90% dimer form as determined by SDS-PAGE under non-reducing condition
<b>Application</b>	Verified Applications: ELISA for PRLR-specific antibody and prolactin (PRL) ligand protein binding assays. Suggested Applications: ELISA for PRLR-specific antibody and prolactin (PRL) ligand protein binding assays. SPR & BLI for PRLR-specific antibody and PRL protein binding assays. Animal immunization, RUO.
<b>Storage</b>	Store at -80 centigrade.
<b>Storage Buffer</b>	0.22µm filtered PBS, pH 7.4
<b>Shipping</b>	Frozen Dry Ice

## GENE INFORMATION

<b>Gene Name</b>	PRLR prolactin receptor [ <i>Homo sapiens</i> (human) ]
<b>Official Symbol</b>	PRLR
<b>Synonyms</b>	PRLR; prolactin receptor; PRL-R; hPRL receptor; secreted prolactin binding protein; hPRLrl;
<b>Gene ID</b>	5618

 Tel: 1-631-559-9269 1-516-512-3133

 Email: [info@creative-biomart.com](mailto:info@creative-biomart.com)  Fax: 1-631-938-8127

 45-1 Ramsey Road, Shirley, NY 11967, USA

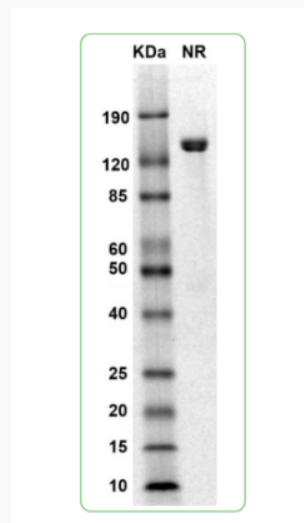
mRNA Refseq [NM\\_000949](#)

Protein Refseq [NP\\_000940](#)

MIM [176761](#)

UniProt ID [P16471](#)

#### SDS-PAGE and WB



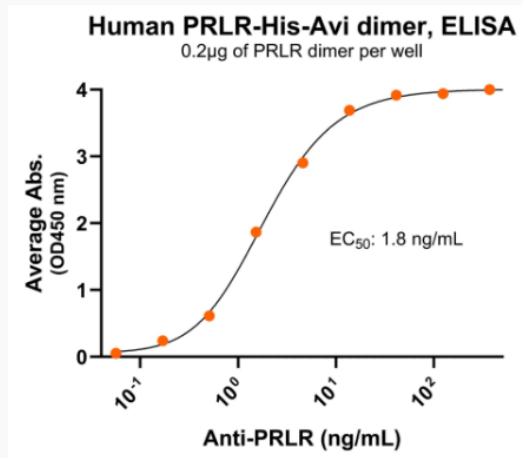
MW: Molecular Weight marker reduced condition NR: PRLR dimer under non-reduced condition

 Tel: 1-631-559-9269 1-516-512-3133

 Email: [info@creative-biomart.com](mailto:info@creative-biomart.com)  Fax: 1-631-938-8127

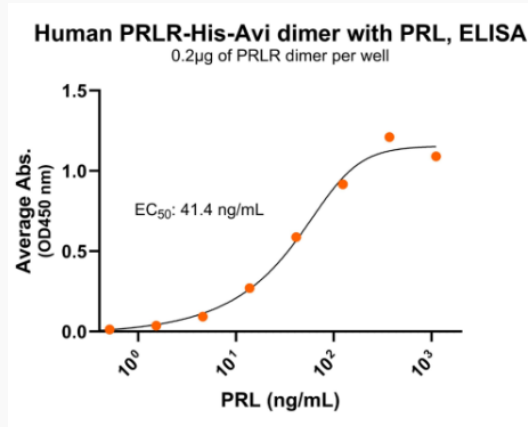
 45-1 Ramsey Road, Shirley, NY 11967, USA

### Bioactivity-Antibody Binding



Immobilized human PRLR dimer protein, His-Avi tag at 2 µg/mL (100 µL/well) can bind anti-human PRLR monoclonal antibody, with half maximal effective concentration (EC<sub>50</sub>) range of 0.9-3.7 µg/mL (QC tested).

### Bioactivity-Ligand Binding



Immobilized human PRLR dimer protein, His-Avi tag at 2 µg/mL (100 µL/well) can bind human PRL, with half maximal effective concentration (EC<sub>50</sub>) range of 20.7-82.8 ng/mL (QC tested).

Tel: 1-631-559-9269 1-516-512-3133

Email: [info@creative-biomart.com](mailto:info@creative-biomart.com) Fax: 1-631-938-8127

45-1 Ramsey Road, Shirley, NY 11967, USA