

## Recombinant Human PRM2 Protein, His-tagged

**Cat. No.** PRM2-2624H    **Lot. No.** (See product label)

### SPECIFICATION

<b>Product Overview</b>	Recombinant Human PRM2 Protein (Val2-Arg100) with a N-His tag was expressed in E. coli.
<b>Species</b>	Human
<b>Source</b>	E.coli
<b>ProteinLength</b>	Val2-Arg100
<b>Description</b>	<p>Protamines substitute for histones in the chromatin of sperm during the haploid phase of spermatogenesis, and are the major DNA-binding proteins in the nucleus of sperm in many vertebrates. They package the sperm DNA into a highly condensed complex in a volume less than 5% of a somatic cell nucleus. Many mammalian species have only one protamine (protamine 1); however, a few species, including human and mouse, have two. This gene encodes protamine 2, which is cleaved to give rise to a family of protamine 2 peptides. Alternatively spliced transcript variants have also been found for this gene.</p>
<b>Form</b>	Freeze-dried powder
<b>Molecular Mass</b>	<p>Predicted Molecular Mass: 16.3 kDa            Accurate Molecular Mass: 17 kDa</p>
<b>Endotoxin</b>	<1.0 EU per 1g (determined by the LAL method).

 Tel: 1-631-559-9269    1-516-512-3133

 Email: [info@creative-biomart.com](mailto:info@creative-biomart.com)     Fax: 1-631-938-8127

 45-1 Ramsey Road, Shirley, NY 11967, USA

<b>Purity</b>	> 90%
<b>Applications</b>	Positive Control; Immunogen; SDS-PAGE; WB.
<b>Stability</b>	The thermal stability is described by the loss rate. The loss rate was determined by accelerated thermal degradation test, that is, incubate the protein at 37 centigrade for 48h, and no obvious degradation and precipitation were observed. The loss rate is less than 5% within the expiration date under appropriate storage condition.
<b>Storage</b>	Avoid repeated freeze/thaw cycles. Store at 2-8 centigrade for one month. Aliquot and store at -80 centigrade for 12 months.
<b>Storage Buffer</b>	20mM Tris, 150mM NaCl, pH8.0, containing 1mM EDTA, 1mM DTT, 0.01% SKL, 5% Trehalose and Proclin300.
<b>Reconstitution</b>	Reconstitute in 20mM Tris, 150mM NaCl (pH8.0) to a concentration of 0.1-1.0 mg/mL. Do not vortex.

## GENE INFORMATION

<b>Gene Name</b>	PRM2 protamine 2 [ Homo sapiens (human) ]
<b>Official Symbol</b>	PRM2
<b>Synonyms</b>	PRM2; protamine 2; CT94.2; protamine-2 cancer/testis antigen family 94, member 2 sperm histone P2 sperm protamine P2 testicular secretory protein Li 40
<b>Gene ID</b>	5620

 Tel: 1-631-559-9269 1-516-512-3133

 Email: [info@creative-biomart.com](mailto:info@creative-biomart.com)  Fax: 1-631-938-8127

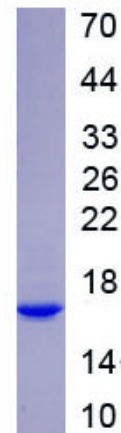
 45-1 Ramsey Road, Shirley, NY 11967, USA

mRNA Refseq [NM\\_002762](#)

Protein Refseq [NP\\_002753](#)

MIM [182890](#)

UniProt ID [P04554](#)



 Tel: 1-631-559-9269 1-516-512-3133

 Email: [info@creative-biomart.com](mailto:info@creative-biomart.com)  Fax: 1-631-938-8127

 45-1 Ramsey Road, Shirley, NY 11967, USA