

## Recombinant Human PRM2 Protein, His/GST-tagged

Cat. No. PRM2-717H Lot. No. (See product label)

### SPECIFICATION

<b>Product Overview</b>	Recombinant Human PRM2(Val2~Arg100) fused with His/GST tag at N-terminal was expressed in E. coli.
<b>Species</b>	Human
<b>Source</b>	E.coli
<b>ProteinLength</b>	Val2~Arg100
<b>Description</b>	<p>Protamines substitute for histones in the chromatin of sperm during the haploid phase of spermatogenesis, and are the major DNA-binding proteins in the nucleus of sperm in many vertebrates. They package the sperm DNA into a highly condensed complex in a volume less than 5% of a somatic cell nucleus. Many mammalian species have only one protamine (protamine 1); however, a few species, including human and mouse, have two. This gene encodes protamine 2, which is cleaved to give rise to a family of protamine 2 peptides. Alternatively spliced transcript variants have also been found for this gene.</p>
<b>Form</b>	PBS, pH7.4, containing 0.01% SKL, 1mM DTT, 5% Trehalose and Proclin300.
<b>Molecular Mass</b>	42.6kDa
<b>Endotoxin</b>	<1.0EU per 1g (determined by the LAL method)
<b>Purity</b>	> 80%

 Tel: 1-631-559-9269 1-516-512-3133

 Email: [info@creative-biomart.com](mailto:info@creative-biomart.com)  Fax: 1-631-938-8127

 45-1 Ramsey Road, Shirley, NY 11967, USA

<b>Applications</b>	Positive Control; Immunogen; SDS-PAGE; WB. If bio-activity of the protein is needed, please check active protein.
<b>Stability</b>	The thermal stability is described by the loss rate. The loss rate was determined by accelerated thermal degradation test, that is, incubate the protein at 37 centigrade for 48h, and no obvious degradation and precipitation were observed. The loss rate is less than 5% within the expiration date under appropriate storage condition.
<b>Storage</b>	Avoid repeated freeze/thaw cycles. Store at 2-8 centigrade for one month. Aliquot and store at -80 centigrade for 12 months.
<b>Reconstitution</b>	Reconstitute in PBS or others.

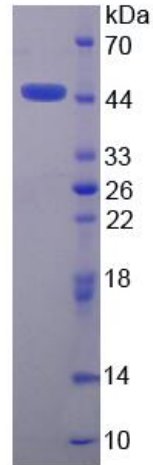
## GENE INFORMATION

<b>Gene Name</b>	PRM2 protamine 2 [ Homo sapiens ]
<b>Official Symbol</b>	PRM2
<b>Synonyms</b>	CT94.2
<b>Gene ID</b>	5620
<b>mRNA Refseq</b>	NM_001286356
<b>Protein Refseq</b>	NP_001273285
<b>UniProt ID</b>	P04554

 Tel: 1-631-559-9269 1-516-512-3133

 Email: [info@creative-biomart.com](mailto:info@creative-biomart.com)  Fax: 1-631-938-8127

 45-1 Ramsey Road, Shirley, NY 11967, USA



15% SDS-PAGE

 Tel: 1-631-559-9269 1-516-512-3133

 Email: [info@creative-biomart.com](mailto:info@creative-biomart.com)  Fax: 1-631-938-8127

 45-1 Ramsey Road, Shirley, NY 11967, USA