

## Recombinant Human PRMT1 Protein, GST-tagged

Cat. No. PRMT1-064H Lot. No. (See product label)

### SPECIFICATION

<b>Product Overview</b>	Active recombinant N-terminal GST-tagged full-length human PRMT1 protein (2-371) was expressed in E. coli.
<b>Species</b>	Human
<b>Source</b>	E.coli
<b>ProteinLength</b>	2-371
<b>Description</b>	This gene encodes a member of the protein arginine N-methyltransferase (PRMT) family. Post-translational modification of target proteins by PRMTs plays an important regulatory role in many biological processes, whereby PRMTs methylate arginine residues by transferring methyl groups from S-adenosyl-L-methionine to terminal guanidino nitrogen atoms. The encoded protein is a type I PRMT and is responsible for the majority of cellular arginine methylation activity. Increased expression of this gene may play a role in many types of cancer. Alternatively spliced transcript variants encoding multiple isoforms have been observed for this gene, and a pseudogene of this gene is located on the long arm of chromosome 5.
<b>Molecular Mass</b>	69.2 kDa
<b>Purity</b>	≥35% estimated by SDS-PAGE
<b>Unit Definition</b>	One unit is the amount of enzyme required to transfer one methyl group to histone H4 per minute using 100 μmol histone H4 (1-21) peptide at 37 centigrade in a

 Tel: 1-631-559-9269 1-516-512-3133

 Email: [info@creative-biomart.com](mailto:info@creative-biomart.com)  Fax: 1-631-938-8127

 45-1 Ramsey Road, Shirley, NY 11967, USA

Methyltransferase Colorimetric Assay Kit.

**Stability** ≥ 6 months

**Storage** At -80 centigrade.

## GENE INFORMATION

**Gene Name** PRMT1 protein arginine methyltransferase 1 [ Homo sapiens (human) ]

**Official Symbol** PRMT1

**Synonyms** PRMT1; protein arginine methyltransferase 1; ANM1; HCP1; IR1B4; HRMT1L2; protein arginine N-methyltransferase 1; HMT1 (hnRNP methyltransferase, S. cerevisiae)-like 2; heterogeneous nuclear ribonucleoprotein methyltransferase 1-like 2; histone-arginine N-methyltransferase PRMT1; interferon receptor 1-bound protein 4; EC 2.1.1.319

**Gene ID** 3276

**mRNA Refseq** NM\_198318

**Protein Refseq** NP\_938074

**MIM** 602950

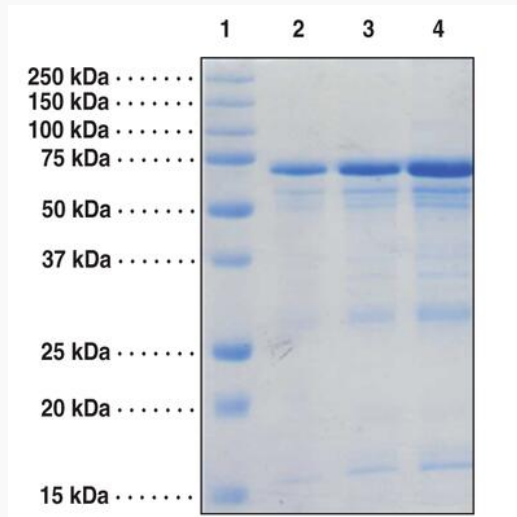
**UniProt ID** Q99873

 Tel: 1-631-559-9269 1-516-512-3133

 Email: [info@creative-biomart.com](mailto:info@creative-biomart.com)  Fax: 1-631-938-8127

 45-1 Ramsey Road, Shirley, NY 11967, USA

**SDS-PAGE analysis  
of PRMT1**



Lane 1: MW Markers

Lane 2: PRMT1 (1  $\mu$ g)

Lane 3: PRMT1 (2  $\mu$ g)

Lane 4: PRMT1 (4  $\mu$ g)