

Active Recombinant Human PRMT1 Protein, His-MBP-tagged

Cat. No. PRMT1-5040H Lot. No. (See product label)

SPECIFICATION

Product Overview	Human HRMT1L2 (NP_938074, 1 a.a. - 353 a.a.) full-length recombinant protein with His-MBP tag expressed in Escherichia coli.
Species	Human
Source	Wheat Germ
Description	The PRMT1 gene encodes a protein arginine methyltransferase that functions as a histone methyltransferase specific for H4 (see MIM 602822).[supplied by OMIM
Form	Liquid
Bio-activity	10000 unit/mL
Molecular Mass	84 kDa
AA Sequence	MHHHHHMKIEEGKLVWINGDKGYNGLAEVGGKFEKDTGIKVTVEHPDKLEEKFPQ VAATGDGPDIIFWAHDRFGGYAQSGLLAEITPKAFQDKLYPFTWDAVRYNGKLIAY PIAVEALSLIYNKDLLPNPPKTWEEIPALDKELKAKGKSALMFNLQEPYFTWPLIAADG GYAFKYENGGYDIKDVGVNAGAKAGLTFLVDLIKNKHMNADTDYSIAEAAFNKGET AMTINGPWAWSNIDTSKVNYGVTVLPTFKGQPSKPFVGVLSAGINAASPKNELAKEF LENYLLTDEGLEAVNKDKPLGAVALKSYEEELAKDPRIATMENAQKGEIMPNIQPM SAFWYAVRTAVINAASGRQTVDEALKDAQTNSSSNNNNNNNNNLGIENGRGSHMA AAEAANCIMEVSCGQAESSEKPNEDMTSKDYFDSYAHFGIHEEMLKDEVRTLTY RNSMFHNRHLFKDKVLDVGSSTGILCMFAAKAGARKVIGIECSSISDYAVKIVKANK

Tel: 1-631-559-9269 1-516-512-3133

Email: info@creative-biomart.com Fax: 1-631-938-8127

45-1 Ramsey Road, Shirley, NY 11967, USA

LDHVVTIIK GKVEEVELPVEKVDIISEWMGYCLFYESMLNTVLYARDKWLPDGLIFP
 DRATLYVTAIEDRQYKDYKIHWWENVYGFDMSCIKDVAIKEPLVDVDPKQLVTNAC
 LIKEVDIYTVKVEDLTFTSPFCLQVKRNDYVHALVAYFNIEFTRCHKRTGFSTSPESPY
 THWKQTVFYMEDYLTVKTGEEIFGTIGMRPNNAKNNRDLDFIDLDFKQGLCELSCST
 DYRMR

Purity > 90% by SDS-PAGE

Applications Functional Study
 SDS-PAGE

Storage Store at 4 centigrade for 1-2 weeks. For long term storage store at -2 centigrade or -8 centigrade. Aliquot to avoid repeated freezing and thawing.

Concentration 1 mg/mL

Storage Buffer In 40 mM Tris, 100 mM NaCl, 4 mM MgCl₂, pH 8.0 (2 mM dithiothreitol, 40% glycerol)

GENE INFORMATION

Gene Name PRMT1 protein arginine methyltransferase 1 [Homo sapiens]

Official Symbol PRMT1

Synonyms

PRMT1; protein arginine methyltransferase 1; HMT1 (hnRNP methyltransferase, S. cerevisiae) like 2 , HMT1 hnRNP methyltransferase like 2 (S. cerevisiae) , HRMT1L2; protein arginine N-methyltransferase 1; ANM1; HCP1; interferon receptor 1-bound protein 4; histone-arginine N-methyltransferase PRMT1; HMT1 (hnRNP methyltransferase, S. cerevisiae)-like 2; heterogeneous nuclear ribonucleoprotein methyltransferase 1-like 2; IR1B4; HRMT1L2;

 Tel: 1-631-559-9269 1-516-512-3133

 Email: info@creative-biomart.com  Fax: 1-631-938-8127

 45-1 Ramsey Road, Shirley, NY 11967, USA

Gene ID 3276

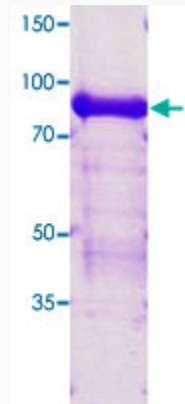
mRNA Refseq NM_001207042

Protein Refseq NP_001193971

MIM 602950

UniProt ID Q99873

**Quality Control
Testing**



Loading 3 μ g protein in 15% SDS-PAGE

 Tel: 1-631-559-9269 1-516-512-3133

 Email: info@creative-biomart.com  Fax: 1-631-938-8127

 45-1 Ramsey Road, Shirley, NY 11967, USA