

Recombinant Human PRMT1 Protein, GST-tagged

Cat. No. PRMT1-5041H Lot. No. (See product label)

SPECIFICATION

Product Overview	Human HRMT1L2 partial ORF (NP_001527, 260 a.a. - 361 a.a.) recombinant protein with GST-tag at N-terminal.
Species	Human
Source	Wheat Germ
Description	The PRMT1 gene encodes a protein arginine methyltransferase that functions as a histone methyltransferase specific for H4 (see MIM 602822).[supplied by OMIM
Molecular Mass	36.96 kDa
AA Sequence	PFCLQVKRNDYVHALVAYFNIEFTRCHKRTGFSTSPESPYTHWKQTVFYMEDYLTV KTGEEIFGTIGMRPNNAKNNRDLDFIDLDFKQQLCELSCSTDYRMR
Applications	Enzyme-linked Immunoabsorbent Assay Western Blot (Recombinant protein) Antibody Production Protein Array
Notes	Best use within three months from the date of receipt of this protein.
Storage	Store at -8 centigrade. Aliquot to avoid repeated freezing and thawing.
Storage Buffer	50 mM Tris-HCl, 10 mM reduced Glutathione, pH=8.0 in the elution buffer.

 Tel: 1-631-559-9269 1-516-512-3133

 Email: info@creative-biomart.com  Fax: 1-631-938-8127

 45-1 Ramsey Road, Shirley, NY 11967, USA

GENE INFORMATION

Gene Name PRMT1 protein arginine methyltransferase 1 [Homo sapiens]

Official Symbol PRMT1

Synonyms PRMT1; protein arginine methyltransferase 1; HMT1 (hnRNP methyltransferase, *S. cerevisiae*) like 2 , HMT1 hnRNP methyltransferase like 2 (*S. cerevisiae*) , HRMT1L2; protein arginine N-methyltransferase 1; ANM1; HCP1; interferon receptor 1-bound protein 4; histone-arginine N-methyltransferase PRMT1; HMT1 (hnRNP methyltransferase, *S. cerevisiae*)-like 2; heterogeneous nuclear ribonucleoprotein methyltransferase 1-like 2; IR1B4; HRMT1L2;

Gene ID 3276

mRNA Refseq NM_001207042

Protein Refseq NP_001193971

MIM 602950

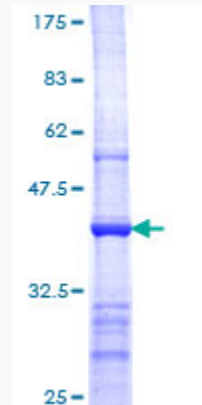
UniProt ID Q99873

 Tel: 1-631-559-9269 1-516-512-3133

 Email: info@creative-biomart.com  Fax: 1-631-938-8127

 45-1 Ramsey Road, Shirley, NY 11967, USA

**Quality Control
Testing**



12.5% SDS-PAGE Stained with Coomassie Blue.

 Tel: 1-631-559-9269 1-516-512-3133

 Email: info@creative-biomart.com  Fax: 1-631-938-8127

 45-1 Ramsey Road, Shirley, NY 11967, USA