

Active Recombinant Human PRMT3 Protein, GST-tagged

Cat. No. PRMT3-007H Lot. No. (See product label)

SPECIFICATION

Product Overview	Recombinant Human PRMT3 protein (2-531) with a N-terminal GST-tag was expressed in E. coli.
Species	Human
Source	E.coli
ProteinLength	2-531
Description	This gene belongs to the protein arginine methyltransferase (PRMT) family. The encoded enzyme catalyzes the methylation of guanidino nitrogens of arginyl residues of proteins. The enzyme acts on 40S ribosomal protein S2 (rpS2), which is its major in-vivo substrate, and is involved in the proper maturation of the 80S ribosome. Alternative splicing results in multiple transcript variants.
Bio-activity	Activity was determined using a radiometric assay with [3H]-S-adenosylmethionine incubated with core histones or the glycine arginine rich (GAR) region from fibrillarin at 30 centigrade for 30 minutes or overnight at room temperature in buffer containing 50 mM Tris, pH 8.0, 150 mM sodium chloride, 3 mM MgCl ₂ , and 5% glycerol. Methylated products were separated by SDS-PAGE and visualized by exposure on autoradiographic film.
Molecular Mass	86.6 kDa
Purity	≥90% estimated by SDS-PAGE

 Tel: 1-631-559-9269 1-516-512-3133

 Email: info@creative-biomart.com  Fax: 1-631-938-8127

 45-1 Ramsey Road, Shirley, NY 11967, USA

Stability	≥ 6 months
Storage	-80 centigrade
Storage Buffer	50 mM Tris-HCl, pH 8.0, containing 150 mM sodium chloride and 20% glycerol

GENE INFORMATION

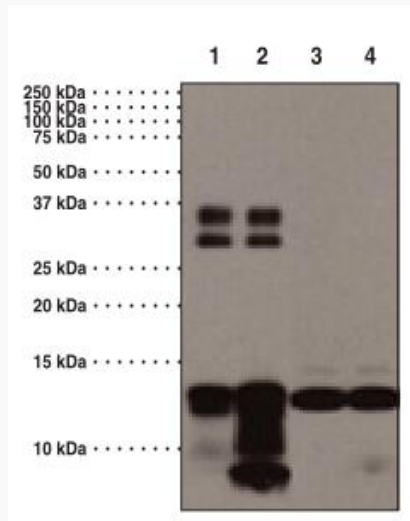
Gene Name	PRMT3 protein arginine methyltransferase 3 [Homo sapiens (human)]
Official Symbol	PRMT3
Synonyms	PRMT3; protein arginine methyltransferase 3; HRMT1L3; protein arginine N-methyltransferase 3; HMT1 hnRNP methyltransferase-like 3; heterogeneous nuclear ribonucleoprotein methyltransferase-like protein 3
Gene ID	10196
mRNA Refseq	NM_005788
Protein Refseq	NP_005779
MIM	603190
UniProt ID	O60678

 Tel: 1-631-559-9269 1-516-512-3133

 Email: info@creative-biomart.com  Fax: 1-631-938-8127

 45-1 Ramsey Road, Shirley, NY 11967, USA

**SDS-PAGE Analysis
of PRMT3**



Lane 1: PRMT3 (3 μ M) with GAR peptide
 Lane 2: PRMT3 (3 μ M) with GAR peptide
 Lane 3: PRMT3 (3 μ M) with Core Histones
 Lane 4: PRMT3 (3 μ M) with Core Histones

Analysis of PRMT3







Lane 1: MW Markers

Lane 2: PRMT3 (2.5 µg)

Lane 3: PRMT3 (5 µg)

 Tel: 1-631-559-9269 1-516-512-3133

 Email: info@creative-biomart.com  Fax: 1-631-938-8127

 45-1 Ramsey Road, Shirley, NY 11967, USA