

Recombinant Human PRMT5 protein, His&FLAG-tagged

Cat. No. PRMT5-2321H Lot. No. (See product label)

SPECIFICATION

Product Overview Recombinant Human PRMT5 protein(NP_006128.1) (Ala 2-Leu 637) was expressed in HEK293, fused with a polyhistidine tag at the C-terminus and a Flag tag at the N-terminus.

Species Human

Source HEK293

ProteinLength 2-637 aa

Form Lyophilized from sterile 50mM Tris, 100mM NaCl, pH 8.0, 0.5mM EDTA, 0.5PMSF, 0.5mM, TCEP, 25% glycerol.

Molecular Mass The recombinant human PRMT5 consists of 655 amino acids and predicts a molecular mass of 75 kDa. In SDS-PAGE under reducing conditions, the apparent molecular mass of rhPRMT5 is approximately 65 kDa.

Endotoxin < 1.0 EU per µg of the protein as determined by the LAL method.

Purity > 85 % as determined by SDS-PAGE

Storage Store it under sterile conditions at -20°C to -80°C upon receiving. Recommend to aliquot the protein into smaller quantities for optimal storage. Avoid repeated freeze-thaw cycles.

 Tel: 1-631-559-9269 1-516-512-3133

 Email: info@creative-biomart.com  Fax: 1-631-938-8127

 45-1 Ramsey Road, Shirley, NY 11967, USA

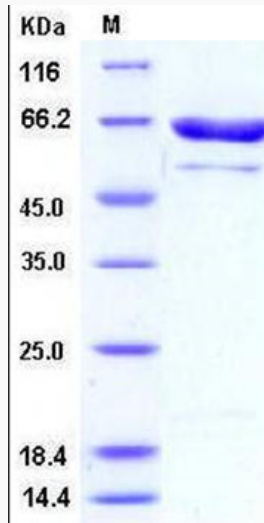
Reconstitution	It is recommended that sterile water be added to the vial to prepare a stock solution of 0.2 ug/ul. Centrifuge the vial at 4°C before opening to recover the entire contents.
protein Refseq-Weblink	http://www.ncbi.nlm.nih.gov/protein/NP_001034708.1
Unit ID	O14744
Unit ID-Weblink	https://www.uniprot.org/uniprotkb/O14744
GENE INFORMATION	
Gene Name	PRMT5 protein arginine methyltransferase 5 [Homo sapiens]
Official Symbol	PRMT5
Synonyms	PRMT5; protein arginine methyltransferase 5; HRMT1L5, SKB1, skb1 (S. pombe) homolog, SKB1 homolog (S. pombe); protein arginine N-methyltransferase 5; SKB1Hs; SKB1 homolog; jak-binding protein 1; 72 kDa ICln-binding protein; HMT1 hnRNP methyltransferase-like 5; shk1 kinase-binding protein 1 homolog; histone-arginine N-methyltransferase PRMT5; JBP1; SKB1; IBP72; HRMT1L5;
Gene ID	10419
mRNA Refseq	NM_001039619
protein Refseq	NP_001034708
MIM	604045

 Tel: 1-631-559-9269 1-516-512-3133

 Email: info@creative-biomart.com  Fax: 1-631-938-8127

 45-1 Ramsey Road, Shirley, NY 11967, USA

SDS-PAGE



 Tel: 1-631-559-9269 1-516-512-3133

 Email: info@creative-biomart.com  Fax: 1-631-938-8127

 45-1 Ramsey Road, Shirley, NY 11967, USA