

## Recombinant Human PRMT6 Protein, His-tagged

Cat. No. PRMT6-001H Lot. No. (See product label)

### SPECIFICATION

<b>Product Overview</b>	Recombinant Human PRMT6 protein with a N-terminal His-tag was expressed in Sf21 cells.
<b>Species</b>	Human
<b>Source</b>	Insect Cells
<b>Molecular Mass</b>	43.7 kDa
<b>Purity</b>	≥60% estimated by SDS-PAGE
<b>Stability</b>	≥ 1 year
<b>Storage</b>	-80 centigrade
<b>Storage Buffer</b>	50 mM Tris-HCl, pH 8.0, containing 150 mM sodium chloride, and 20% glycerol

### GENE INFORMATION

<b>Gene Name</b>	PRMT6 protein arginine methyltransferase 6 [ Homo sapiens (human) ]
<b>Official Symbol</b>	PRMT6
<b>Synonyms</b>	PRMT6; protein arginine methyltransferase 6; HRMT1L6; protein arginine N-methyltransferase 6; HMT1 hnRNP methyltransferase-like 6; heterogeneous nuclear

 Tel: 1-631-559-9269 1-516-512-3133

 Email: [info@creative-biomart.com](mailto:info@creative-biomart.com)  Fax: 1-631-938-8127

 45-1 Ramsey Road, Shirley, NY 11967, USA

ribonucleoprotein methyltransferase-like protein 6; histone-arginine N-methyltransferase PRMT; EC 2.1.1.319

**Gene ID** 55170

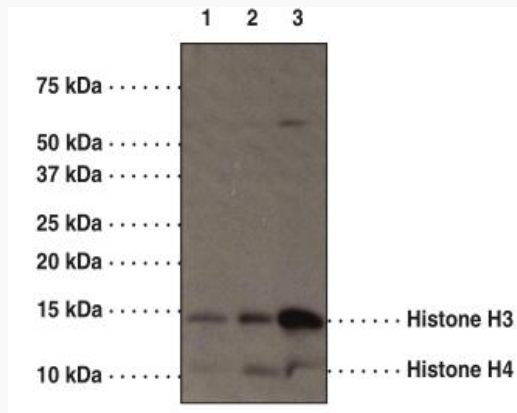
**mRNA Refseq** NM\_018137

**Protein Refseq** NP\_060607

**MIM** 608274

**UniProt ID** Q96LA8

**Autoradiograph of core histones separated on SDS-PAGE following a reaction with [3H]-SAM and PRMT6**



Lane 1: 0.5  $\mu$ M PRMT6 (O/N rxn)

Lane 2: 2  $\mu$ M PRMT6 (1.5 hr rxn)

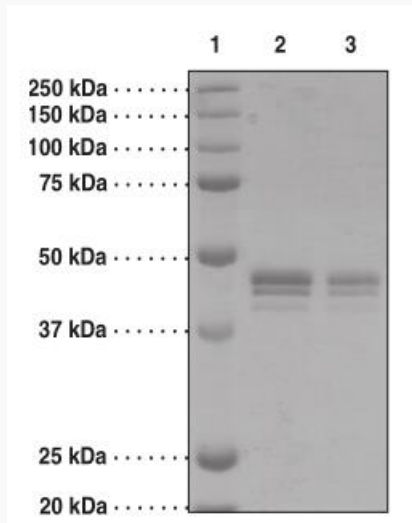
Lane 3: 2  $\mu$ M PRMT6 (O/N rxn)

 Tel: 1-631-559-9269 1-516-512-3133

 Email: [info@creative-biomart.com](mailto:info@creative-biomart.com)  Fax: 1-631-938-8127

 45-1 Ramsey Road, Shirley, NY 11967, USA

**SDS-PAGE Analysis  
of PRMT6**



Lane 1: MW Markers

Lane 2: PRMT6 (4 µg)

Lane 3: PRMT6 (2 µg)

 Tel: 1-631-559-9269 1-516-512-3133

 Email: [info@creative-biomart.com](mailto:info@creative-biomart.com)  Fax: 1-631-938-8127

 45-1 Ramsey Road, Shirley, NY 11967, USA