

## Recombinant Human PRMT6 Protein, His-tagged

Cat. No. PRMT6-044H Lot. No. (See product label)

### SPECIFICATION

<b>Product Overview</b>	Recombinant N-terminal His-tagged human PRMT6 protein was expressed in Sf21 cells.
<b>Species</b>	Human
<b>Source</b>	Insect Cells
<b>Description</b>	<p>The protein encoded by this gene belongs to the arginine N-methyltransferase family, which catalyze the sequential transfer of methyl group from S-adenosyl-L-methionine to the side chain nitrogens of arginine residues within proteins, to form methylated arginine derivatives and S-adenosyl-L-homocysteine. This protein can catalyze both, the formation of omega-N monomethylarginine and asymmetrical dimethylarginine, with a strong preference for the latter. It specifically mediates the asymmetric dimethylation of Arg2 of histone H3, and the methylated form represents a specific tag for epigenetic transcriptional repression. This protein also forms a complex with, and methylates DNA polymerase beta, resulting in stimulation of polymerase activity by enhancing DNA binding and processivity.</p>
<b>Molecular Mass</b>	43.7 kDa
<b>Purity</b>	≥60%
<b>Stability</b>	≥ 2 years
<b>Storage</b>	At -80 centigrade.

 Tel: 1-631-559-9269 1-516-512-3133

 Email: [info@creative-biomart.com](mailto:info@creative-biomart.com)  Fax: 1-631-938-8127

 45-1 Ramsey Road, Shirley, NY 11967, USA

**Storage Buffer** 50 mM Tris-HCl, pH 8.0, containing 150 mM sodium chloride, and 20% glycerol

## GENE INFORMATION

**Gene Name** PRMT6 protein arginine methyltransferase 6 [ Homo sapiens (human) ]

**Official Symbol** PRMT6

**Synonyms** PRMT6; protein arginine methyltransferase 6; HRMT1L6; protein arginine N-methyltransferase 6; HMT1 hnRNP methyltransferase-like 6; heterogeneous nuclear ribonucleoprotein methyltransferase-like protein 6; histone-arginine N-methyltransferase PRMT6; EC 2.1.1.319

**Gene ID** 55170

**mRNA Refseq** NM\_018137

**Protein Refseq** NP\_060607

**MIM** 608274

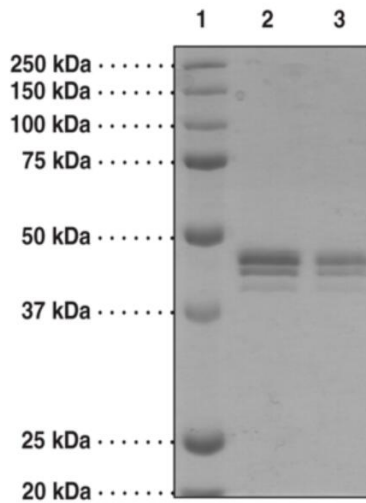
**UniProt ID** Q96LA8

 Tel: 1-631-559-9269 1-516-512-3133

 Email: [info@creative-biomart.com](mailto:info@creative-biomart.com)  Fax: 1-631-938-8127

 45-1 Ramsey Road, Shirley, NY 11967, USA

**SDS-PAGE analysis  
of PRMT6**



Lane 1: MW Markers

Lane 2: PRMT6 (4 µg)

Lane 3: PRMT6 (4 µg)

 Tel: 1-631-559-9269 1-516-512-3133

 Email: [info@creative-biomart.com](mailto:info@creative-biomart.com)  Fax: 1-631-938-8127

 45-1 Ramsey Road, Shirley, NY 11967, USA