

## Recombinant Human PRMT6 Protein, GST-tagged

**Cat. No.** PRMT6-5044H    **Lot. No.** (See product label)

### SPECIFICATION

<b>Product Overview</b>	Human HRMT1L6 partial ORF ( NP_060607, 241 a.a. - 316 a.a.) recombinant protein with GST-tag at N-terminal.
<b>Species</b>	Human
<b>Source</b>	Wheat Germ
<b>Description</b>	Protein arginine N-methyltransferases, such as PRMT6, catalyze the sequential transfer of a methyl group from S-adenosyl-L-methionine to the side chain nitrogens of arginine residues within proteins to form methylated arginine derivatives and S-adenosyl-L-homocysteine.[supplied by OMIM
<b>Molecular Mass</b>	34.1 kDa
<b>AA Sequence</b>	ESEKPLVLSTSPFHPATHWKQALLYLNPEVQVEQDQTDVSGEITLLPSRDNPRLRLVLLRYKVGDQEEKTKDFAMED
<b>Applications</b>	Enzyme-linked Immunoabsorbent Assay Western Blot (Recombinant protein) Antibody Production Protein Array
<b>Notes</b>	Best use within three months from the date of receipt of this protein.
<b>Storage</b>	Store at -8 centigrade. Aliquot to avoid repeated freezing and thawing.

 Tel: 1-631-559-9269    1-516-512-3133

 Email: [info@creative-biomart.com](mailto:info@creative-biomart.com)     Fax: 1-631-938-8127

 45-1 Ramsey Road, Shirley, NY 11967, USA

**Storage Buffer** 50 mM Tris-HCl, 10 mM reduced Glutathione, pH=8.0 in the elution buffer.

## GENE INFORMATION

**Gene Name** PRMT6 protein arginine methyltransferase 6 [ Homo sapiens ]

**Official Symbol** PRMT6

**Synonyms** PRMT6; protein arginine methyltransferase 6; HMT1 hnRNP methyltransferase like 6 (S. cerevisiae) , HRMT1L6; protein arginine N-methyltransferase 6; FLJ10559; HMT1 hnRNP methyltransferase-like 6; histone-arginine N-methyltransferase PRMT6; heterogeneous nuclear ribonucleoprotein methyltransferase-like protein 6; HRMT1L6; FLJ51477;

**Gene ID** 55170

**mRNA Refseq** NM\_018137

**Protein Refseq** NP\_060607

**MIM** 608274

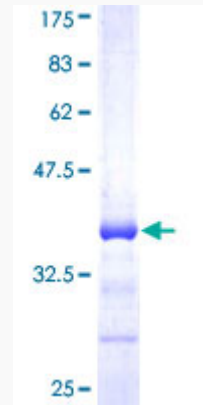
**UniProt ID** Q96LA8

 Tel: 1-631-559-9269 1-516-512-3133

 Email: [info@creative-biomart.com](mailto:info@creative-biomart.com)  Fax: 1-631-938-8127

 45-1 Ramsey Road, Shirley, NY 11967, USA

**Quality Control  
Testing**



12.5% SDS-PAGE Stained with Coomassie Blue.

 Tel: 1-631-559-9269 1-516-512-3133

 Email: [info@creative-biomart.com](mailto:info@creative-biomart.com)  Fax: 1-631-938-8127

 45-1 Ramsey Road, Shirley, NY 11967, USA