

Recombinant Human PRMT8 Protein, GST-tagged

Cat. No. PRMT8-004H Lot. No. (See product label)

SPECIFICATION

Product Overview	Recombinant Human PRMT8 protein with a N-terminal GST-tag was expressed in E. coli.
Species	Human
Source	E.coli
Description	Arginine methylation is a widespread posttranslational modification mediated by arginine methyltransferases, such as PRMT8. Arginine methylation is involved in a number of cellular processes, including DNA repair, RNA transcription, signal transduction, protein compartmentalization, and possibly protein translation.
Molecular Mass	65.7 kDa
Purity	≥90% estimated by SDS-PAGE
Stability	≥ 9 months
Storage	-80 centigrade
Storage Buffer	50 mM Tris-HCl, pH 8.0, containing 150 mM sodium chloride and 20% glycerol

GENE INFORMATION

Gene Name	PRMT8 protein arginine methyltransferase 8 [Homo sapiens (human)]
------------------	---

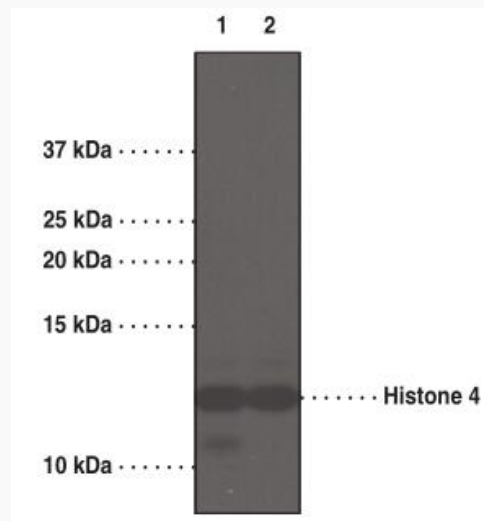
 Tel: 1-631-559-9269 1-516-512-3133

 Email: info@creative-biomart.com  Fax: 1-631-938-8127

 45-1 Ramsey Road, Shirley, NY 11967, USA

Official Symbol	PRMT8
Synonyms	PRMT8; protein arginine methyltransferase 8; HRMT1L3; HRMT1L4; protein arginine N methyltransferase 8; HMT1 hnRNP methyltransferase-like 3; arginine methyltransferase 8; heterogeneous nuclear ribonucleoprotein methyltransferase-like protein 4; protein arginine N-methyltransferase 4; EC 2.1.1.319; EC 2.1.1.321
Gene ID	56341
mRNA Refseq	NM_001256536
Protein Refseq	NP_001243465
MIM	610086
UniProt ID	Q9NR22

SDS-PAGE Analysis of PRMT8



Autoradiograph of core histones separated on SDS-PAGE following reaction with [3

 Tel: 1-631-559-9269 1-516-512-3133

 Email: info@creative-biomart.com  Fax: 1-631-938-8127

 45-1 Ramsey Road, Shirley, NY 11967, USA



HJ-SAM and 2 μ M PRMT8 overnight at room temperature at 37 centigrade for 1.5 hours.

Analysis of PRMT8

Lane 1: MW Markers

Lane 2: PRMT8 (1 μ g)

Lane 3: PRMT8 (2 μ g)

Lane 4: PRMT8 (5 μ g)

 Tel: 1-631-559-9269 1-516-512-3133

 Email: info@creative-biomart.com  Fax: 1-631-938-8127

 45-1 Ramsey Road, Shirley, NY 11967, USA