

Recombinant Human PRND Protein, His-tagged

Cat. No. PRND-01H Lot. No. (See product label)

SPECIFICATION

Product Overview	Recombinant human PRND protein (27-152aa), fused to His-tag at N-terminus, was expressed in E. coli and purified by using conventional chromatography techniques.
Species	Human
Source	E.coli
ProteinLength	27-152 a.a.
Description	This gene is found on chromosome 20, approximately 20 kbp downstream of the gene encoding cellular prion protein, to which it is biochemically and structurally similar. The protein encoded by this gene is a membrane glycosylphosphatidylinositol-anchored glycoprotein that is found predominantly in testis. Mutations in this gene may lead to neurological disorders.
Form	Liquid
Molecular Mass	16.9 kDa (149aa) confirmed by MALDI-TOF
AA Sequence	MGSSHHHHHSSGLVPRGSHMGSRGIKHRIKWNRKALPSTAQITEAQVAENRPGA FIKQGRKLDIDFGAEGNRYEANYWQFPDGIHYNGCSEANVTKEAFVTGCINATQAA NQGEFQKPDNKLHQQVLWRLVQELCSLKHCEFWLERG
Purity	> 95% by SDS-PAGE

 Tel: 1-631-559-9269 1-516-512-3133

 Email: info@creative-biomart.com  Fax: 1-631-938-8127

 45-1 Ramsey Road, Shirley, NY 11967, USA

Storage	Can be stored at +2 to +8 centigrade for 1 week. For long term storage, aliquot and store at -20 to -80 centigrade. Avoid repeated freezing and thawing cycles.
Concentration	0.25 mg/mL (determined by Bradford assay)
Storage Buffer	20mM Tris-HCl buffer (pH 7.5) containing 0.2M NaCl, 30% glycerol, 1mM DTT

GENE INFORMATION

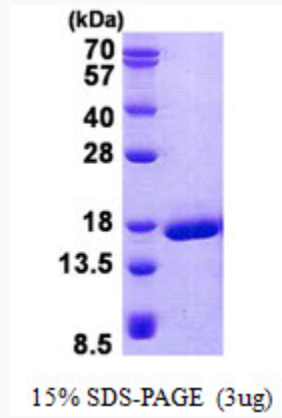
Gene Name	PRND prion like protein doppel [Homo sapiens (human)]
Official Symbol	PRND
Synonyms	PRND; prion like protein doppel; DPL; PrPLP; DOPPEL; dJ1068H6.4; prion-like protein doppel; downstream prion protein-like; prion gene complex, downstream; prion protein 2 (duplet)
Gene ID	23627
mRNA Refseq	NM_012409
Protein Refseq	NP_036541
MIM	604263
UniProt ID	Q9UKY0

 Tel: 1-631-559-9269 1-516-512-3133

 Email: info@creative-biomart.com  Fax: 1-631-938-8127

 45-1 Ramsey Road, Shirley, NY 11967, USA

SDS-PAGE



3 μ g by SDS-PAGE under reducing condition and visualized by coomassie blue stain.

 Tel: 1-631-559-9269 1-516-512-3133

 Email: info@creative-biomart.com  Fax: 1-631-938-8127

 45-1 Ramsey Road, Shirley, NY 11967, USA