

# Recombinant Full Length Human PROC Protein, C-Flag-tagged

**Cat. No.** PROC-1743HFL    **Lot. No.** (See product label)

## SPECIFICATION

<b>Product Overview</b>	Recombinant Full Length Human PROC Protein, fused to Flag-tag at C-terminus, was expressed in Mammalian cells.
<b>Species</b>	Human
<b>Source</b>	Mammalian Cells
<b>ProteinLength</b>	1-461 aa
<b>Description</b>	This gene encodes a vitamin K-dependent plasma glycoprotein. The encoded protein is cleaved to its activated form by the thrombin-thrombomodulin complex. This activated form contains a serine protease domain and functions in degradation of the activated forms of coagulation factors V and VIII. Mutations in this gene have been associated with thrombophilia due to protein C deficiency, neonatal purpura fulminans, and recurrent venous thrombosis.
<b>Form</b>	25 mM Tris HCl, pH 7.3, 100 mM glycine, 10% glycerol.
<b>Molecular Mass</b>	50 kDa
<b>AA Sequence</b>	MWQLTSLLLFVATWGISGTPAPLDSVFSSSERAHQVLRIRKRANSFLEELRHSSLER ECIEEICDFEAK EIFQNVDDTLAFWSKHVDGDQCLVLPLEHPCASLCCGHGTCIDG IGSFSCDCRSGWEGRFCQREVSFLNC SLDNGGCTHYCLEEVGWRRRCSCAPGYKL GDDLQCHPAVKFPCGRPWKRMKRSHLKRDTEQEDQVDP RLIDGKMTRRGD SPWQVVLLDSKKKLACGAVLIHPSWVLTAAHCMDESKLLVRLGEYDLRRWEKWEL

 Tel: 1-631-559-9269    1-516-512-3133

 Email: [info@creative-biomart.com](mailto:info@creative-biomart.com)     Fax: 1-631-938-8127

 45-1 Ramsey Road, Shirley, NY 11967, USA

DL DIKEV FVHPNYSKSTTDNDIALH LAQPATLSQTIVPICLPDSGLAERELNQAGQE  
 TLVTGWGYHSSREK EAKRNRTFVLNFIKIPVVP HNECSEVMSNMVSENMLCAGILG  
 DRQDACEGDSGGPMVASFHGTWFLVGLV  
 SWGEGCGLLHNYGVYTKVSRYL DWIHGHIRDKEAPQKSWAPTRTRPLEQKLISEED  
 LAANDILDYKDDDDKV

**Purity** > 80% as determined by SDS-PAGE and Coomassie blue staining.

**Stability** Stable for 12 months from the date of receipt of the product under proper storage and handling conditions. Avoid repeated freeze-thaw cycles.

**Storage** Store at -80 centigrade.

**Concentration** >50 ug/mL as determined by microplate BCA method.

**Preparation** Recombinant protein was captured through anti-DDK affinity column followed by conventional chromatography steps.

**Protein Families** Druggable Genome, Protease

**Protein Pathways** Complement and coagulation cascades

**Full Length** Full L.

## GENE INFORMATION

**Gene Name** PROC protein C, inactivator of coagulation factors Va and VIIIa [ Homo sapiens (human) ]

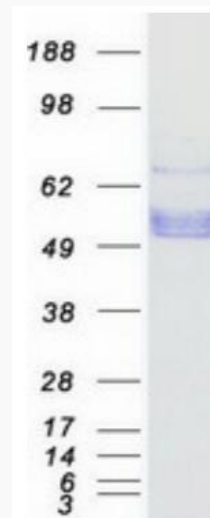
**Official Symbol** PROC

 Tel: 1-631-559-9269 1-516-512-3133

 Email: [info@creative-biomart.com](mailto:info@creative-biomart.com)  Fax: 1-631-938-8127

 45-1 Ramsey Road, Shirley, NY 11967, USA

<b>Synonyms</b>	PC; APC; PROC1; THPH3; THPH4
<b>Gene ID</b>	5624
<b>mRNA Refseq</b>	NM_000312.4
<b>Protein Refseq</b>	NP_000303.1
<b>MIM</b>	612283
<b>UniProt ID</b>	P04070



Coomassie blue staining of purified PROC protein.

 Tel: 1-631-559-9269 1-516-512-3133

 Email: [info@creative-biomart.com](mailto:info@creative-biomart.com)  Fax: 1-631-938-8127

 45-1 Ramsey Road, Shirley, NY 11967, USA