

Recombinant Human PROCR Protein (Ser18-Ser210), C-His tagged

Cat. No. PROCR-3433H Lot. No. (See product label)

SPECIFICATION

Product Overview	Recombinant human PROCR (Ser18-Ser210) protein fused with the C-terminal His tag was expressed in Mammalian cells.
Species	Human
Source	Mammalian Cells
ProteinLength	Ser18-Ser210
Molecular Mass	21.34 kDa
Purity	>90 % as determined by SDS-PAGE.
Notes	For research use only.
Storage	Use a manual defrost freezer and avoid repeated freeze thaw cycles. Store at 2 to 8 centigrade for one week. Store at -20 to -80 centigrade for twelve months from the date of receipt.
Storage Buffer	Supplied as solution form in PBS or lyophilized from PBS.
Reconstitution	Reconstitute in sterile water for a stock solution.
Shipping	In general, proteins are provided as lyophilized powder/frozen liquid. They are

 Tel: 1-631-559-9269 1-516-512-3133

 Email: info@creative-biomart.com  Fax: 1-631-938-8127

 45-1 Ramsey Road, Shirley, NY 11967, USA

shipped out with dry ice/blue ice unless customers require otherwise.

GENE INFORMATION

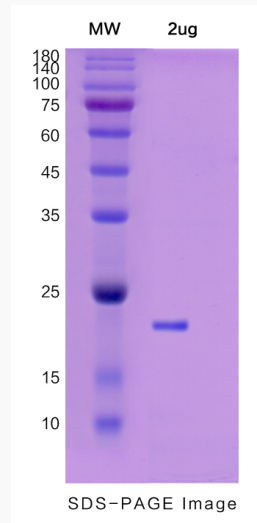
Gene Name	PROCR protein C receptor, endothelial [Homo sapiens (human)]
Official Symbol	PROCR
Synonyms	PROCR; protein C receptor, endothelial; endothelial protein C receptor; CCD41; CD201; EPCR; APC receptor; centrocyclin; CD201 antigen; activated protein C receptor; endothelial cell protein C receptor; cell cycle, centrosome-associated protein; CCCA; bA42O4.2; MGC23024;
Gene ID	10544
mRNA Refseq	NM_006404
Protein Refseq	NP_006395
MIM	600646
UniProt ID	Q9UNN8

 Tel: 1-631-559-9269 1-516-512-3133

 Email: info@creative-biomart.com  Fax: 1-631-938-8127

 45-1 Ramsey Road, Shirley, NY 11967, USA

SDS-PAGE



 Tel: 1-631-559-9269 1-516-512-3133

 Email: info@creative-biomart.com  Fax: 1-631-938-8127

 45-1 Ramsey Road, Shirley, NY 11967, USA