

## Recombinant Human PROCR Protein (Met1-Thr209), C-His tagged

Cat. No. PROCR-3909H Lot. No. (See product label)

### SPECIFICATION

<b>Product Overview</b>	Recombinant human PROCR (Met1-Thr209) fused with the C-terminal His tag was expressed in Mammalian cells.
<b>Species</b>	Human
<b>Source</b>	Mammalian Cells
<b>ProteinLength</b>	Met1-Thr209
<b>Form</b>	Lyophilized powder/frozen liquid
<b>Molecular Mass</b>	22.99 kDa
<b>Endotoxin</b>	< 1.0 EU/μg of the protein as determined by the LAL method.
<b>Purity</b>	>90% as determined by SDS-PAGE.
<b>Notes</b>	For research use only.
<b>Storage</b>	Use a manual defrost freezer and avoid repeated freeze thaw cycles. Store at 2 to 8 centigrade for one week. Store at -20 to -80 centigrade for twelve months from the date of receipt.
<b>Storage Buffer</b>	Supplied as solution form in PBS or lyophilized from PBS.

 Tel: 1-631-559-9269 1-516-512-3133

 Email: [info@creative-biomart.com](mailto:info@creative-biomart.com)  Fax: 1-631-938-8127

 45-1 Ramsey Road, Shirley, NY 11967, USA

**Reconstitution** Reconstitute in sterile water for a stock solution.

**Shipping** They are shipped out with dry ice/blue ice unless customers require otherwise.

## GENE INFORMATION

**Gene Name** [PROCR protein C receptor, endothelial \[ Homo sapiens \(human\) \]](#)

**Official Symbol** [PROCR](#)

**Synonyms** PROCR; protein C receptor, endothelial; endothelial protein C receptor; CCD41; CD201; EPCR; APC receptor; centrocyclin; CD201 antigen; activated protein C receptor; endothelial cell protein C receptor; cell cycle, centrosome-associated protein; CCCA; bA42O4.2; MGC23024;

**Gene ID** [10544](#)

**mRNA Refseq** [NM\\_006404](#)

**Protein Refseq** [NP\\_006395](#)

**MIM** [600646](#)

**UniProt ID** [Q9UNN8](#)

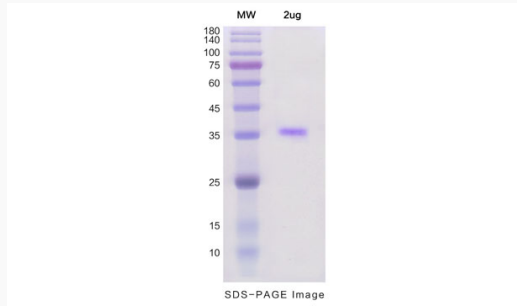
 Tel: 1-631-559-9269 1-516-512-3133

 Email: [info@creative-biomart.com](mailto:info@creative-biomart.com)  Fax: 1-631-938-8127

 45-1 Ramsey Road, Shirley, NY 11967, USA



## SDS-PAGE



Tel: 1-631-559-9269 1-516-512-3133

Email: [info@creative-biomart.com](mailto:info@creative-biomart.com) Fax: 1-631-938-8127

45-1 Ramsey Road, Shirley, NY 11967, USA