

## Active Recombinant Human PROK1 protein, His-GST-tagged

Cat. No. PROK1-592H Lot. No. (See product label)

### SPECIFICATION

|                         |  |
|-------------------------|--|
| <b>Product Overview</b> | Active Recombinant Human PROK1 protein(P58294)(1~105 aa), fused with N-terminal His tag and GST tag, was expressed in E.coli.  |
| <b>Species</b>          | Human  |
| <b>Source</b>           | E.coli   |
| <b>ProteinLength</b>    | 1-105 aa   |
| <b>Form</b>             | Lyophilized from sterile 20mM Tris, 150mM NaCl, pH8.0, containing 1mM EDTA, 1mM DTT, 0.01% SKL, 5% Trehalose and Proclin300.   |
| <b>Bio-activity</b>     | <p>Endothelial gland-derived VEGF (EG-VEGF) is an angiogenic protein that is structurally unrelated to VEGF. It is expressed in steroidogenic tissues such as adrenal gland, ovary, testis, and placenta. Like VEGF it can induce fenestrae in endothelial cells. To test the effect of EG-VEGF on cell proliferation of ECV-304 endothelium cell line, cells were seeded into triplicate wells of 96-well plates at a density of 5,000 cells/well and allowed to attach overnight, then the medium was replaced with serum-free standard DMEM prior to the addition of various concentrations of EG-VEGF. After incubated for 72h, cells were observed by inverted microscope and cell proliferation was measured by Cell Counting Kit-8 (CCK-8). Briefly, 10<math>\mu</math> of CCK-8 solution was added to each well of the plate, then measure the absorbance at 450nm using a microplate reader after incubating the plate for 1-4 hours at 37°C.</p> |

 Tel: 1-631-559-9269 1-516-512-3133

 Email: [info@creative-biomart.com](mailto:info@creative-biomart.com)  Fax: 1-631-938-8127

 45-1 Ramsey Road, Shirley, NY 11967, USA

|                       |  |
|-----------------------|--|
| <b>Molecular Mass</b> | 41.7kDa  |
| <b>Endotoxin</b>      | <1.0EU per 1µg (determined by the LAL method).   |
| <b>Purity</b>         | > 90% as determined by SDS-PAGE.   |
| <b>Storage</b>        | Avoid repeated freeze/thaw cycles. Store at -20°C for 12 months. Aliquot and store at -80°C for 12 months. |
| <b>Reconstitution</b> | Reconstitute in 20mM Tris, 150mM NaCl (pH8.0) to a concentration of 0.1-1.0mg/mL.<br>Do not vortex.        |

## GENE INFORMATION

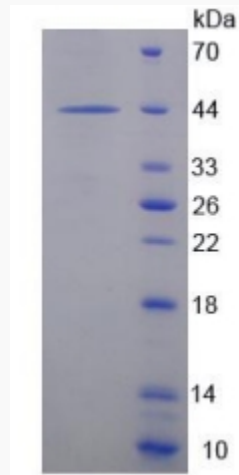
|                        |   |
|------------------------|---|
| <b>Gene Name</b>       | PROK1 prokineticin 1 [ Homo sapiens ]   |
| <b>Official Symbol</b> | PROK1   |
| <b>Synonyms</b>        | PROK1; prokineticin 1; prokineticin-1; black mamba toxin related protein; EGVEGF; mambakine; PK1; PRK1; EG-VEGF; black mamba toxin-related protein; endocrine-gland-derived vascular endothelial growth factor; |
| <b>Gene ID</b>         | 84432   |
| <b>mRNA Refseq</b>     | NM_032414   |
| <b>Protein Refseq</b>  | NP_115790   |
| <b>MIM</b>             | 606233  |
| <b>UniProt ID</b>      | P58294  |

 Tel: 1-631-559-9269 1-516-512-3133

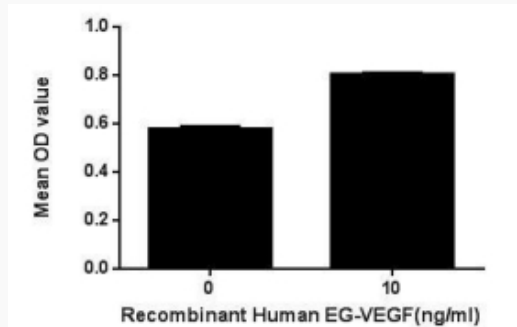
 Email: [info@creative-biomart.com](mailto:info@creative-biomart.com)  Fax: 1-631-938-8127

 45-1 Ramsey Road, Shirley, NY 11967, USA

**SDS-PAGE**



**Activity**



 Tel: 1-631-559-9269 1-516-512-3133

 Email: [info@creative-biomart.com](mailto:info@creative-biomart.com)  Fax: 1-631-938-8127

 45-1 Ramsey Road, Shirley, NY 11967, USA