

## Recombinant Human PROK1 protein, His-tagged

Cat. No. PROK1-7517H Lot. No. (See product label)

### SPECIFICATION

<b>Product Overview</b>	Recombinant Human PROK1 protein(Met 1-Phe105) (P58294) was expressed in Insect Cells, with a C-terminal polyhistidine tag.
<b>Species</b>	Human
<b>Source</b>	Insect Cells
<b>ProteinLength</b>	1-105 aa
<b>Form</b>	Lyophilized from sterile 20mM Tris, 500mM NaCl, pH 7.4, 0.02% Tween-80, 10% gly, 1mM DTT.
<b>Molecular Mass</b>	The secreted recombinant human EG-VEGF consists of 96 amino acids and predicts a molecular mass of 11 KDa. The apparent molecular mass of the protein is approximately 15 Kda in SDS-PAGE under reducing conditions due to glycosylation.
<b>Endotoxin</b>	< 1.0 EU per µg of the protein as determined by the LAL method.
<b>Purity</b>	> 89 % as determined by SDS-PAGE
<b>Storage</b>	Store it under sterile conditions at -20°C to -80°C upon receiving. Recommend to aliquot the protein into smaller quantities for optimal storage. Avoid repeated freeze-thaw cycles.
<b>Reconstitution</b>	It is recommended that sterile water be added to the vial to prepare a stock solution of

 Tel: 1-631-559-9269 1-516-512-3133

 Email: [info@creative-biomart.com](mailto:info@creative-biomart.com)  Fax: 1-631-938-8127

 45-1 Ramsey Road, Shirley, NY 11967, USA

0.2 ug/ul. Centrifuge the vial at 4°C before opening to recover the entire contents.

## GENE INFORMATION

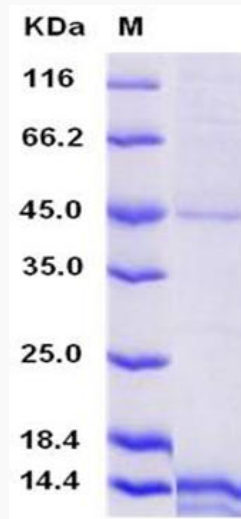
<b>Gene Name</b>	PROK1 prokineticin 1 [ Homo sapiens ]
<b>Official Symbol</b>	PROK1
<b>Synonyms</b>	PROK1; prokineticin 1; prokineticin-1; black mamba toxin related protein; EGVEGF; mambakine; PK1; PRK1; EG-VEGF; black mamba toxin-related protein; endocrine-gland-derived vascular endothelial growth factor;
<b>Gene ID</b>	84432
<b>mRNA Refseq</b>	NM_032414
<b>Protein Refseq</b>	NP_115790
<b>MIM</b>	606233
<b>UniProt ID</b>	P58294

 Tel: 1-631-559-9269 1-516-512-3133

 Email: [info@creative-biomart.com](mailto:info@creative-biomart.com)  Fax: 1-631-938-8127

 45-1 Ramsey Road, Shirley, NY 11967, USA

**SDS-PAGE**



 Tel: 1-631-559-9269 1-516-512-3133

 Email: [info@creative-biomart.com](mailto:info@creative-biomart.com)  Fax: 1-631-938-8127

 45-1 Ramsey Road, Shirley, NY 11967, USA