

Recombinant Full Length Human PROKR1 Protein, C-Flag-tagged

Cat. No. PROKR1-1902HFL **Lot. No.** (See product label)

SPECIFICATION

Product Overview	Recombinant Full Length Human PROKR1 Protein, fused to Flag-tag at C-terminus, was expressed in Mammalian cells.
Species	Human
Source	Mammalian Cells
Description	This gene encodes a member of the G-protein-coupled receptor family. The encoded protein binds to prokineticins (1 and 2), leading to the activation of MAPK and STAT signaling pathways. Prokineticins are protein ligands involved in angiogenesis and inflammation. The encoded protein is expressed in peripheral tissues such as those comprising the circulatory system, lungs, reproductive system, endocrine system and the gastrointestinal system. The protein may be involved in signaling in human fetal ovary during initiation of primordial follicle formation. Sequence variants in this gene may be associated with recurrent miscarriage.
Form	25 mM Tris HCl, pH 7.3, 100 mM glycine, 10% glycerol.
Molecular Mass	44.6 kDa
AA Sequence	METTMGMFMDDNATNTSTSFLSVLNPHGAHATSFPFNFSYSDYDMPLDEDEDVTNS RTFFAAKIVIGMALV GIMLVCGIGNFIFIAALVRYKCLRNLNLLIANLAISDFLVAIVCC PFEMDYYVVRQLSWEHGHVLCSTV NYLRTVSLYVSTNALLAIAIDRYLAIVHPLRPR MKCQTATGLIALVWTVSILIAIPSAFTTETVLVIVK SKEKIFCGQIWPVDQQLYYKSY

 Tel: 1-631-559-9269 1-516-512-3133

 Email: info@creative-biomart.com  Fax: 1-631-938-8127

 45-1 Ramsey Road, Shirley, NY 11967, USA

FLFIFGIEFVGPVVTMTLCYARISRELWFKAVPGFQTEQIRKRLRCRR KTVLVLMCILT
 AYLVCWAPFYGFTIVRDFPPTVFVKEKHLYLTAFYIVECIAMSNMINTLCFVTVKNDTV
 KYFKKIMLLHWKASYNGGKSSADLDLKTIGMPATEEVDCIRLK TRTRPLEQKLISEED
 LAANDILDYKDDDDKV

Purity	> 80% as determined by SDS-PAGE and Coomassie blue staining.
Stability	Stable for 12 months from the date of receipt of the product under proper storage and handling conditions. Avoid repeated freeze-thaw cycles.
Storage	Store at -80 centigrade.
Concentration	>50 ug/mL as determined by microplate BCA method.
Preparation	Recombinant protein was captured through anti-DDK affinity column followed by conventional chromatography steps.
Protein Families	Druggable Genome, GPCR, Transmembrane
Full Length	Full L.

GENE INFORMATION

Gene Name	PROKR1 prokineticin receptor 1 [Homo sapiens (human)]
Official Symbol	PROKR1
Synonyms	ZAQ; PKR1; GPR73; PK-R1; GPR73a
Gene ID	10887

 Tel: 1-631-559-9269 1-516-512-3133

 Email: info@creative-biomart.com  Fax: 1-631-938-8127

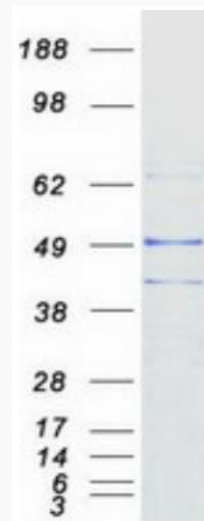
 45-1 Ramsey Road, Shirley, NY 11967, USA

mRNA Refseq [NM_138964.4](#)

Protein Refseq [NP_620414.1](#)

MIM [607122](#)

UniProt ID [Q8TCW9](#)



Coomassie blue staining of purified PROKR1 protein.

 Tel: 1-631-559-9269 1-516-512-3133

 Email: info@creative-biomart.com  Fax: 1-631-938-8127

 45-1 Ramsey Road, Shirley, NY 11967, USA