

Active Recombinant Human PROM1 Full Length Transmembrane protein(Nanodisc)

Cat. No. PROM1-095H Lot. No. (See product label)

SPECIFICATION

Product Overview

Recombinant Human PROM1 Full Length Transmembrane protein(O43490), was expressed in HEK293.

Species

Human

Source

HEK293

Form

Lyophilized from nanodisc solubilization buffer (20 mM Tris-HCl, 150 mM NaCl, pH 8.0). Normally 5% – 8% trehalose is added as protectants before lyophilization. Please see Certificate of Analysis for specific instructions.

Bio-activity

Elisa plates were pre-coated with Flag Tag PROM1-Nanodisc (0.2µg/per well). Serial diluted anti-Flag monoclonal antibody solutions were added, washed, and incubated with secondary antibody before Elisa reading. From above data, the EC50 for anti-Flag monoclonal antibody binding with PROM1-Nanodisc is 5.105ng/ml.

Molecular Mass

The human full length PROM1 protein has a MW of 97.2 kDa.

Storage

Store at -20°C to -80°C for 12 months in lyophilized form. After reconstitution, if not intended for use within a month, aliquot and store at -80°C (Avoid repeated freezing and thawing). Lyophilized proteins are shipped at ambient temperature.

Reconstitution

It is recommended that sterile water be added to the vial to prepare a stock solution of 0.2 ug/ul. Centrifuge the vial at 4°C before opening to recover the entire contents.

 Tel: 1-631-559-9269 1-516-512-3133

 Email: info@creative-biomart.com  Fax: 1-631-938-8127

 45-1 Ramsey Road, Shirley, NY 11967, USA

Full Length Full L.

GENE INFORMATION

Gene Name [PROM1 prominin 1 \[Homo sapiens \]](#)

Official Symbol [PROM1](#)

Synonyms PROM1; prominin 1; macular dystrophy, retinal 2 , MCDR2, prominin (mouse) like 1 , PROML1, Stargardt disease 4 (autosomal dominant) , STGD4; prominin-1; AC133; CD133; RP41; hProminin; antigen AC133; prominin-like protein 1; hematopoietic stem cell antigen; MCDR2; STGD4; CORD12; PROML1; MSTP061;

Gene ID [8842](#)

mRNA Refseq [NM_001145847](#)

Protein Refseq [NP_001139319](#)

MIM [604365](#)

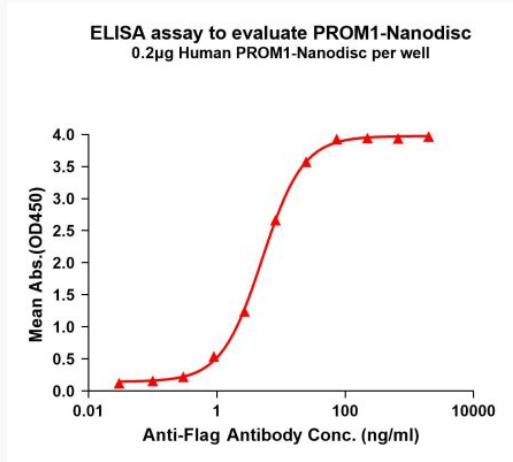
UniProt ID [O43490](#)

 Tel: 1-631-559-9269 1-516-512-3133

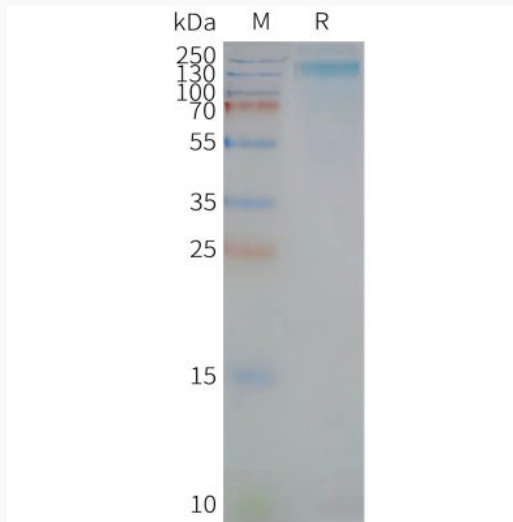
 Email: info@creative-biomart.com  Fax: 1-631-938-8127

 45-1 Ramsey Road, Shirley, NY 11967, USA

Activity



SDS-PAGE



Tel: 1-631-559-9269 1-516-512-3133

Email: info@creative-biomart.com Fax: 1-631-938-8127

45-1 Ramsey Road, Shirley, NY 11967, USA