

Recombinant Human PROM1 Protein (508-792 aa), His-tagged

Cat. No. PROM1-1493H Lot. No. (See product label)

SPECIFICATION

Product Overview	Recombinant Human PROM1 Protein (508-792 aa) is produced by Yeast expression system. This protein is fused with a 6xHis tag at the N-terminal. Research Area: Epigenetics and Nuclear Signaling. Protein Description: Partial.
Species	Human
Source	Yeast
ProteinLength	508-792 aa
Description	May play a role in cell differentiation, proliferation and apoptosis . Binds cholesterol in cholesterol-containing plasma mbrane microdomains and may play a role in the organization of the apical plasma mbrane in epithelial cells. During early retinal development acts as a key regulator of disk morphogenesis. Involved in regulation of MAPK and Akt signaling pathways. In neuroblastoma cells suppresses cell differentiation such as neurite outgrowth in a RET-dependent manner.
Form	Tris-based buffer,50% glycerol
Molecular Mass	34.2 kDa
AA Sequence	GANVEKLICEPYTSKELFRVLDTPYLLNEDWEYYLSGKLFNKSKMKLTFEQVYSDCK KNRGTYGTLHLQNSFNISEHLNINEHTGSISSELESKVNLNIFLLGAAGRKNLQDFAA CGIDRMNYDSYLAQTGKSPAGVNLLSFAYDLEAKANSLPPGNLRNSLKRDAQTIKI HQQRVLPSEQSLSTLYQSVKILQRTGNGLLERVTRILASLDFAQNFITNNTSSVIEETK

 Tel: 1-631-559-9269 1-516-512-3133

 Email: info@creative-biomart.com  Fax: 1-631-938-8127

 45-1 Ramsey Road, Shirley, NY 11967, USA

KYGRTIIGYFEHYLQWIEFSISEKVASCKPVATALDTAVDVFLCSYIIDPLN

Purity > 90% as determined by SDS-PAGE.

Notes Repeated freezing and thawing is not recommended. Store working aliquots at 4 centigrade for up to one week.

Storage The shelf life is related to many factors, storage state, buffer ingredients, storage temperature and the stability of the protein itself. Generally, the shelf life of liquid form is 6 months at -20 centigrade/-80 centigrade. The shelf life of lyophilized form is 12 months at -20 centigrade/-80 centigrade.

Concentration A hardcopy of COA with reconstitution instruction is sent along with the products.

GENE INFORMATION

Gene Name [PROM1 prominin 1 \[Homo sapiens \]](#)

Official Symbol [PROM1](#)

Synonyms PROM1; prominin 1; prominin-1; AC133; CD133; RP41; MCDR2; STGD4; CORD12; PROML1; MSTP061;

Gene ID [8842](#)

mRNA Refseq [NM_001145847](#)

Protein Refseq [NP_001139319](#)

MIM [604365](#)

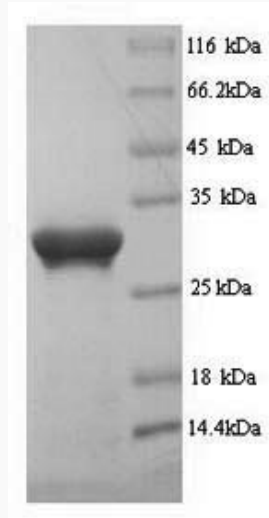
 Tel: 1-631-559-9269 1-516-512-3133

 Email: info@creative-biomart.com  Fax: 1-631-938-8127

 45-1 Ramsey Road, Shirley, NY 11967, USA

UniProt ID

O43490



(Tris-Glycine gel) Discontinuous SDS-PAGE (reduced) with 5% enrichment gel and 15% separation gel.

 Tel: 1-631-559-9269 1-516-512-3133

 Email: info@creative-biomart.com  Fax: 1-631-938-8127

 45-1 Ramsey Road, Shirley, NY 11967, USA