

Recombinant Human PROM1 Protein, C-His-tagged

Cat. No. PROM1-161H Lot. No. (See product label)

SPECIFICATION

Product Overview	Recombinant Human PROM1 Protein with C-His tag was expressed in E. coli.
Species	Human
Source	E.coli
Description	<p>CD133, also known as Prominin, was first described as a cell surface marker recognized by monoclonal antibody AC133 on putative hematopoietic stem cells. Subsequent cDNA cloning indicated that CD133 is a five-transmembrane protein with a predicated molecular weight of 97 kDa. Due to heavy glycosylation, its apparent molecular weight is 130 kDa as determined by SDS-PAGE analysis. Besides blood stem cells, CD133 is expressed on and used to isolate other stem cells, including cancer stem cells. A deletion mutation in CD133 produces aberrant protein localization and may result in retinal degeneration in humans.</p>
Molecular Mass	~31 kDa
AA Sequence	<p>GANVEKLICEPYTSKELFRVLDTPYLLNEDWEYYLSGKLFNKSKMKLTFEQVYSDCK KNRGTYGTLHLQNSFNISEHLNINEHTGSISSELESKVNLNIFLLGAAGRKNLQDFAA CGIDRMNYDSYLAQTGKSPAGVNLLSFAYDLEAKANSLPPGNLRNSLKRDAQTIKI HQQRVLPIEQSLSTLYQSVKILQRTGNGLLERVTRILASLDFAQNFITNTSSVIIIEETK KYGRTIIGYFEHYLQWIEFSISEKVASCKPVATALDTAVDVFLCSYIIDPLN</p>
Purity	Transferred into competent cells and the supernatant was purified by NI column affinity chromatography and the purity is > 85% (by SDS-PAGE).

 Tel: 1-631-559-9269 1-516-512-3133

 Email: info@creative-biomart.com  Fax: 1-631-938-8127

 45-1 Ramsey Road, Shirley, NY 11967, USA

Notes	For research use only, not for use in diagnostic procedure.
Storage	Store at 4 centigrade short term. Aliquot and store at -20 centigrade long term. Avoid freeze-thaw cycles.
Concentration	≥0.5 mg/mL
Storage Buffer	PBS, 4M Urea, pH7.4
GENE INFORMATION	
Gene Name	PROM1 prominin 1 [Homo sapiens (human)]
Official Symbol	PROM1
Synonyms	PROM1; prominin 1; macular dystrophy, retinal 2 , MCDR2, prominin (mouse) like 1 , PROML1, Stargardt disease 4 (autosomal dominant) , STGD4; prominin-1; AC133; CD133; RP41; hProminin; antigen AC133; prominin-like protein 1; hematopoietic stem cell antigen; MCDR2; STGD4; CORD12; PROML1; MSTP061;
Gene ID	8842
mRNA Refseq	NM_001145847
Protein Refseq	NP_001139319
MIM	604365
UniProt ID	O43490

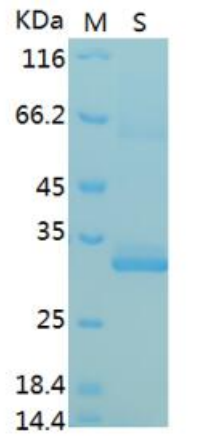
 Tel: 1-631-559-9269 1-516-512-3133

 Email: info@creative-biomart.com  Fax: 1-631-938-8127

 45-1 Ramsey Road, Shirley, NY 11967, USA



SDS-PAGE



SDS-PAGE Result

Tel: 1-631-559-9269 1-516-512-3133

Email: info@creative-biomart.com Fax: 1-631-938-8127

45-1 Ramsey Road, Shirley, NY 11967, USA