

# Recombinant Human PROM1 Full Length Transmembrane protein(Nanodisc), His-tagged

**Cat. No.** PROM1-1893H    **Lot. No.** (See product label)

## SPECIFICATION

<b>Product Overview</b>	Recombinant Human PROM1 Full Length Transmembrane protein(Nanodisc)(O43490-1)(Gly20-His865), fused with C-terminal His tag, was expressed in HEK293.
<b>Species</b>	Human
<b>Source</b>	HEK293
<b>ProteinLength</b>	Gly20-His865
<b>Tag</b>	C-His
<b>Form</b>	Supplied as 0.22 um filtered solution in PBS (pH 7.4).
<b>Bio-activity</b>	Immobilized Human CD133 Nanodisc, His Tag at 2ug/ml (100ul/well) on the plate. Dose response curve for Anti-CD133 Antibody, hFc Tag with the EC50 of 4.4ng/ml determined by ELISA. The affinity constant of 0.25 nM as determined in SPR assay (Biacore T200).
<b>Molecular Mass</b>	The protein has a predicted MW of 98.60 kDa.
<b>Endotoxin</b>	Less than 1EU per ug by the LAL method.
<b>Storage</b>	Valid for 12 months from date of receipt when stored at -80°C.; Recommend to

 Tel: 1-631-559-9269    1-516-512-3133

 Email: [info@creative-biomart.com](mailto:info@creative-biomart.com)     Fax: 1-631-938-8127

 45-1 Ramsey Road, Shirley, NY 11967, USA

aliquot the protein into smaller quantities for optimal storage. Please minimize freeze-thaw cycles.

**Reconstitution**

It is recommended that sterile water be added to the vial to prepare a stock solution of 0.2 ug/ul. Centrifuge the vial at 4°C before opening to recover the entire contents.

## GENE INFORMATION

**Gene Name** [PROM1 prominin 1 \[ Homo sapiens \]](#)

**Official Symbol** [PROM1](#)

**Synonyms**

PROM1; prominin 1; macular dystrophy, retinal 2 , MCDR2, prominin (mouse) like 1 , PROML1, Stargardt disease 4 (autosomal dominant) , STGD4; prominin-1; AC133; CD133; RP41; hProminin; antigen AC133; prominin-like protein 1; hematopoietic stem cell antigen; MCDR2; STGD4; CORD12; PROML1; MSTP061;

**Gene ID** [8842](#)

**mRNA Refseq** [NM\\_001145847](#)

**Protein Refseq** [NP\\_001139319](#)

**MIM** [604365](#)

**UniProt ID** [O43490](#)

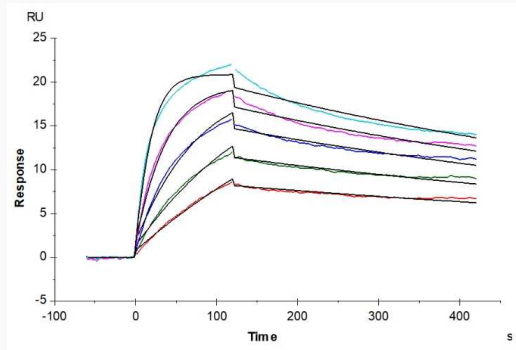
 Tel: 1-631-559-9269 1-516-512-3133

 Email: [info@creative-biomart.com](mailto:info@creative-biomart.com)  Fax: 1-631-938-8127

 45-1 Ramsey Road, Shirley, NY 11967, USA



Activity



Tel: 1-631-559-9269 1-516-512-3133

Email: [info@creative-biomart.com](mailto:info@creative-biomart.com) Fax: 1-631-938-8127

45-1 Ramsey Road, Shirley, NY 11967, USA