

## Recombinant Human PROM1 protein, His-tagged

Cat. No. PROM1-327H Lot. No. (See product label)

### SPECIFICATION

<b>Product Overview</b>	Recombinant Human PROM1 protein(O43490)(Gly20-Gly108), fused with His tag, was expressed in HEK293.
<b>Species</b>	Human
<b>Source</b>	HEK293
<b>ProteinLength</b>	Gly20-Gly108
<b>Form</b>	Lyophilized from 0.22 µm filtered solution in PBS, pH7.4.
<b>Molecular Mass</b>	The protein has a calculated MW of 78kDa.The reducing (R) heterodimer protein migrates as 70-90 kDa due to glycosylation
<b>Endotoxin</b>	<1EU/mg
<b>Purity</b>	SDS-PAGE>95%SEC>95%
<b>Storage</b>	Store at -20°C.
<b>Reconstitution</b>	sterile H29O

### GENE INFORMATION

**Gene Name** PROM1 prominin 1 [ Homo sapiens ]

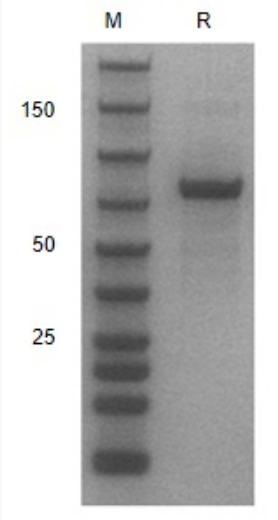
 Tel: 1-631-559-9269 1-516-512-3133

 Email: [info@creative-biomart.com](mailto:info@creative-biomart.com)  Fax: 1-631-938-8127

 45-1 Ramsey Road, Shirley, NY 11967, USA

<b>Official Symbol</b>	PROM1
<b>Synonyms</b>	PROM1; prominin 1; macular dystrophy, retinal 2, MCDR2, prominin (mouse) like 1, PROML1, Stargardt disease 4 (autosomal dominant), STGD4; prominin-1; AC133; CD133; RP41; hProminin; antigen AC133; prominin-like protein 1; hematopoietic stem cell antigen; MCDR2; STGD4; CORD12; PROML1; MSTP061;
<b>Gene ID</b>	8842
<b>mRNA Refseq</b>	NM_001145847
<b>Protein Refseq</b>	NP_001139319
<b>MIM</b>	604365
<b>UniProt ID</b>	O43490

**SDS-PAGE**



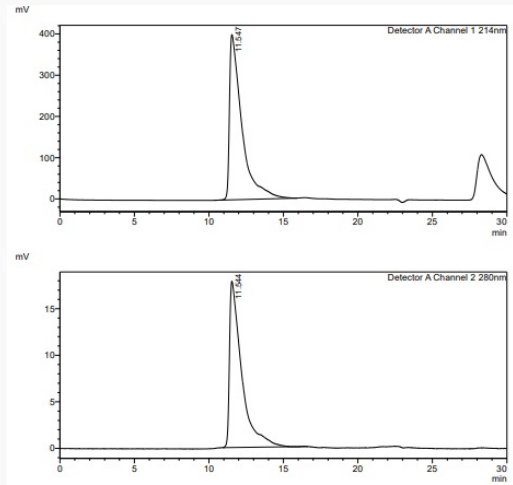
The SDS-PAGE gel image displays two lanes. Lane M is a molecular weight marker with bands at 150, 50, and 25 kDa. Lane R shows a single prominent band at approximately 100 kDa, corresponding to the protein PROM1.

Tel: 1-631-559-9269 1-516-512-3133

Email: [info@creative-biomart.com](mailto:info@creative-biomart.com) Fax: 1-631-938-8127

45-1 Ramsey Road, Shirley, NY 11967, USA

SDS-HPLC



 Tel: 1-631-559-9269 1-516-512-3133

 Email: [info@creative-biomart.com](mailto:info@creative-biomart.com)  Fax: 1-631-938-8127

 45-1 Ramsey Road, Shirley, NY 11967, USA