

Recombinant Human PROM1 Protein, MYC/DDK-tagged, C13 and N15-labeled

Cat. No. PROM1-412H Lot. No. (See product label)

SPECIFICATION

Product Overview	PROM1 MS Standard C13 and N15-labeled recombinant protein (NP_006008) with a C-terminal MYC/DDK tag, was expressed in HEK293 cells.
Species	Human
Source	HEK293
Description	This gene encodes a pentaspan transmembrane glycoprotein. The protein localizes to membrane protrusions and is often expressed on adult stem cells, where it is thought to function in maintaining stem cell properties by suppressing differentiation. Mutations in this gene have been shown to result in retinitis pigmentosa and Stargardt disease. Expression of this gene is also associated with several types of cancer. This gene is expressed from at least five alternative promoters that are expressed in a tissue-dependent manner. Multiple transcript variants encoding different isoforms have been found for this gene. [provided by RefSeq, Mar 2009]
Molecular Mass	97 kDa
AA Sequence	MALVLGSLLLLGLCGNSFSGGQPSSTDAPKAWNYELPATNYETQDSHKAGPIGILFE LVHIFLYVVQPRDFPEDTLRKFLQKAYESKIDYDKPETVILGLKIVYYEAGIILCCVGLL FIILMPLVGYFFCMCRCCNKCGGEMHQRQKENGPFLLRKCFAISLLVICIISIGIFYGFV ANHQVRTRIKRSRKLADSNFKDLRTLLNETPEQIKYILAQYNTTKDKAFTDLNSINSVL GGGILDRLRPNIIPVLDEIKSMATAIKETKEALENMNSTLKSLHQQSTQLSSSLTSVKT

 Tel: 1-631-559-9269 1-516-512-3133

 Email: info@creative-biomart.com  Fax: 1-631-938-8127

 45-1 Ramsey Road, Shirley, NY 11967, USA

SLRSSLNDPLCLVHPSSSETCNSIRLSLSQLNSNPQLRQLPPVDAELDNVNNVLRDLDL
 DGLVQQGYQSLNDIPDRVQRQTTTIVVAGIKRVLNSIGSDIDNVTQRLPIQDILSAFSV
 YVNNTESYIHRNLPTLEEYDSYWWLGGLVICSLTLIVIFYLGLLCGVCYDRHATP
 TTRGCVSNTGGVFLMVGVLGSLFCWILMIIVLTFVFGANVEKLICEPYTSKELFRVL
 DTPYLLNEDWEYYLSGKLFNKSKMKLTFEQVYSDCKKNRGTYGTLHLQNSFNISEHL
 NINEHTGSISSELESKVNLNIFLLGAAGRKNLQDFAACGIDRMNYDSYLAQTGKSPA
 GVNLLSFAYDLEAKANSLPPGNLRNSLKRDAQTIKTIHQQRVLPSEQSLSTLYQSVKIL
 QRTGNGLLERVTRILASLDFANFITNNTSSVIIIEETKKYGRTIIGYFEHYLQWIEFSIS
 EKVASCKPVATALDTAVDVFLCSYIIDPLNLFWFGIGKATVLLPALIFAVKLAKYYRR
 MDSEDDVYDDVETIPMKNMENGNGYHKDHVYGIHNPVMTSPSQHTRTRPLEQKLIS
 EEDLAANDILDYKDDDDKV

Purity > 80% as determined by SDS-PAGE and Coomassie blue staining

Stability Stable for 3 months from receipt of products under proper storage and handling conditions.

Storage Store at -80 centigrade. Avoid repeated freeze-thaw cycles.

Concentration 50 µg/mL as determined by BCA

Storage Buffer 100 mM glycine, 25 mM Tris-HCl, pH 7.3.

GENE INFORMATION

Gene Name [PROM1](#) [prominin 1 \[Homo sapiens \(human\) \]](#)

Official Symbol [PROM1](#)

Synonyms PROM1; prominin 1; macular dystrophy, retinal 2, MCDR2, prominin (mouse) like 1, PROML1, Stargardt disease 4 (autosomal dominant), STGD4; prominin-1; AC133;

 Tel: 1-631-559-9269 1-516-512-3133

 Email: info@creative-biomart.com  Fax: 1-631-938-8127

 45-1 Ramsey Road, Shirley, NY 11967, USA

CD133; RP41; hProminin; antigen AC133; prominin-like protein 1; hematopoietic stem cell antigen; MCDR2; STGD4; CORD12; PROML1; MSTP061;

Gene ID 8842

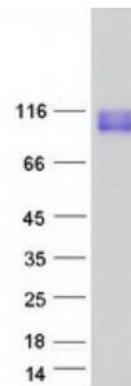
mRNA Refseq NM_006017

Protein Refseq NP_006008

MIM 604365

UniProt ID O43490

SDS-PAGE



 Tel: 1-631-559-9269 1-516-512-3133

 Email: info@creative-biomart.com  Fax: 1-631-938-8127

 45-1 Ramsey Road, Shirley, NY 11967, USA