

PROM1 Antibody-coupled magnetic MicroBeads

Cat. No. PROM1-503M Lot. No. (See product label)

SPECIFICATION

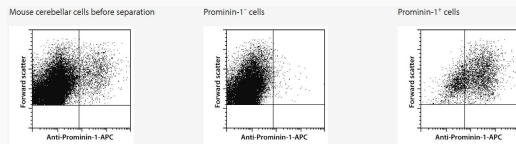
Species Mouse

Capacity for 5×10^7 total cells

Background

Prominin-1 is a glycoprotein with close structural similarity to its human ortholog, CD133. Prominin-1 expression has been demonstrated on cells of different embryonic and adult tissues, including ES-derived committed and early progenitor cells, the developing and postnatal central nervous system, kidney tubules³, and cells of the hematopoietic system. In the developing nervous system prominin-1 is predominantly expressed on neuroepithelial cells and other epithelia. In the postnatal brain, prominin-1 expression has been found in areas of neurogenesis, such as the subventricular zone (SVZ). Prominin-1 is preferentially localized to plasma membrane protrusions of the apical membrane.

Analysis



Enrichment of Prominin-1+ cells from mouse cerebellum (postnatal day 1) using Anti-Prominin-1 MicroBeads, a MiniMACS Separator, and MS Columns.

 Tel: 1-631-559-9269 1-516-512-3133

 Email: info@creative-biomart.com  Fax: 1-631-938-8127

 45-1 Ramsey Road, Shirley, NY 11967, USA