

# Recombinant Human PROM1 Protein (Ser279-Gly390), C-His tagged

**Cat. No.** PROM1-5259H    **Lot. No.** (See product label)

## SPECIFICATION

<b>Product Overview</b>	Recombinant human PROM1 (Ser279-Gly390) fused with the C-terminal His tag was expressed in Mammalian cells.
<b>Species</b>	Human
<b>Source</b>	Mammalian Cells
<b>ProteinLength</b>	Ser279-Gly390
<b>Form</b>	Lyophilized powder/frozen liquid
<b>Molecular Mass</b>	12.32 kDa
<b>Endotoxin</b>	< 1.0 EU/μg of the protein as determined by the LAL method.
<b>Purity</b>	>90% as determined by SDS-PAGE.
<b>Notes</b>	For research use only.
<b>Storage</b>	Use a manual defrost freezer and avoid repeated freeze thaw cycles. Store at 2 to 8 centigrade for one week. Store at -20 to -80 centigrade for twelve months from the date of receipt.
<b>Storage Buffer</b>	Supplied as solution form in PBS or lyophilized from PBS.

 Tel: 1-631-559-9269    1-516-512-3133

 Email: [info@creative-biomart.com](mailto:info@creative-biomart.com)     Fax: 1-631-938-8127

 45-1 Ramsey Road, Shirley, NY 11967, USA

**Reconstitution** Reconstitute in sterile water for a stock solution.

**Shipping** They are shipped out with dry ice/blue ice unless customers require otherwise.

## GENE INFORMATION

**Gene Name** [PROM1 prominin 1 \[ Homo sapiens \(human\) \]](#)

**Official Symbol** [PROM1](#)

**Synonyms** PROM1; prominin 1; macular dystrophy, retinal 2, MCDR2, prominin (mouse) like 1, PROML1, Stargardt disease 4 (autosomal dominant), STGD4; prominin-1; AC133; CD133; RP41; hProminin; antigen AC133; prominin-like protein 1; hematopoietic stem cell antigen; MCDR2; STGD4; CORD12; PROML1; MSTP061;

**Gene ID** [8842](#)

**mRNA Refseq** [NM\\_001145847](#)

**Protein Refseq** [NP\\_001139319](#)

**MIM** [604365](#)

**UniProt ID** [O43490](#)

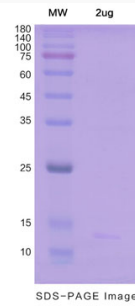
 Tel: 1-631-559-9269 1-516-512-3133

 Email: [info@creative-biomart.com](mailto:info@creative-biomart.com)  Fax: 1-631-938-8127

 45-1 Ramsey Road, Shirley, NY 11967, USA



## SDS-PAGE



Tel: 1-631-559-9269 1-516-512-3133

Email: [info@creative-biomart.com](mailto:info@creative-biomart.com) Fax: 1-631-938-8127

45-1 Ramsey Road, Shirley, NY 11967, USA