

## Recombinant Human PROM1 protein, His-tagged

Cat. No. PROM1-7072H Lot. No. (See product label)

### SPECIFICATION

<b>Product Overview</b>	Recombinant Human PROM1 aa. (Ile171~Asp431) fused with N-terminal His tag was produced in E. coli cells.
<b>Species</b>	Human
<b>Source</b>	E.coli
<b>ProteinLength</b>	Ile171~Asp431
<b>Form</b>	Freeze-dried powder
<b>Molecular Mass</b>	28kDa as determined by SDS-PAGE reducing conditions.
<b>Endotoxin</b>	<1.0EU per 1ug (determined by the LAL method)
<b>Purity</b>	>98%
<b>Characteristic</b>	The isoelectric point is 6.8.
<b>Applications</b>	Positive Control; Immunogen; SDS-PAGE; WB.
<b>Stability</b>	The thermal stability is described by the loss rate of the target protein. The loss rate was determined by accelerated thermal degradation test, that is, incubate the protein at 37°C for 48h, and no obvious degradation and precipitation were observed. (Referring from China Biological Products Standard, which was calculated by the

 Tel: 1-631-559-9269 1-516-512-3133

 Email: [info@creative-biomart.com](mailto:info@creative-biomart.com)  Fax: 1-631-938-8127

 45-1 Ramsey Road, Shirley, NY 11967, USA

Arrhenius equation.) The loss of this protein is less than 5% within the expiration date under appropriate storage condition.

**Storage**

Avoid repeated freeze/thaw cycles. Store at 2-8°C for one month. Aliquot and store at -80°C for 12 months.

**Concentration**

200ug/mL

**Storage buffer**

20mM Tris, 150mM NaCl, pH8.0, containing 1mM EDTA, 1mM DTT, 0.01% sarcosyl, 5%Trehalose and Proclin300.

**Reconstitution**

Reconstitute in 20mM Tris, 150mM NaCl (pH8.0) to a concentration of 0.1-1.0 mg/mL.  
Do not vortex

## GENE INFORMATION

**Gene Name**

PROM1 prominin 1 [ Homo sapiens (human) ]

**Official Symbol**

PROM1

**Synonyms**

PROM1; prominin 1; RP41; AC133; CD133; MCDR2; STGD4; CORD12; PROML1; MSTP061; prominin-1; antigen AC133; hProminin; hematopoietic stem cell antigen; prominin-like protein 1

**Gene ID**

8842

**mRNA Refseq**

NM\_001145847.1

**Protein Refseq**


NP\_001139319.1

**UniProt ID**

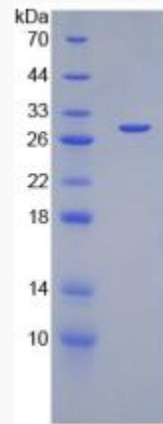
O43490


 Tel: 1-631-559-9269 1-516-512-3133

 Email: [info@creative-biomart.com](mailto:info@creative-biomart.com)  Fax: 1-631-938-8127


 45-1 Ramsey Road, Shirley, NY 11967, USA

**SDS-PAGE**



 Tel: 1-631-559-9269 1-516-512-3133

 Email: [info@creative-biomart.com](mailto:info@creative-biomart.com)  Fax: 1-631-938-8127

 45-1 Ramsey Road, Shirley, NY 11967, USA