

Recombinant Human PROM1 Protein, DYKDDDDK-tagged

Cat. No. PROM1-953H Lot. No. (See product label)

SPECIFICATION

Product Overview	Recombinant Human prominin 1(PROM1) protein, transcript variant 1(NM_006017), with a DYKDDDDK tag, was expressed in human cells.
Species	Human
Source	Human Cells
Description	This gene encodes a pentaspan transmembrane glycoprotein. The protein localizes to membrane protrusions and is often expressed on adult stem cells, where it is thought to function in maintaining stem cell properties by suppressing differentiation. Mutations in this gene have been shown to result in retinitis pigmentosa and Stargardt disease. Expression of this gene is also associated with several types of cancer. This gene is expressed from at least five alternative promoters that are expressed in a tissue-dependent manner. Multiple transcript variants encoding different isoforms have been found for this gene.
Form	Purified protein formulated in a sterile solution of TBS buffer, pH7.334, without any preservatives.
Molecular Mass	97 kDa
Endotoxin	Endotoxin level is < 0.1 ng/g of protein (<1EU /g)
Purity	>90% by SDS-PAGE gel and Coomassie Blue staining

 Tel: 1-631-559-9269 1-516-512-3133

 Email: info@creative-biomart.com  Fax: 1-631-938-8127

 45-1 Ramsey Road, Shirley, NY 11967, USA

Applications Antigen, Western, ELISA and other in vitro binding or in vivo functional assays, and protein-protein interaction studies.

GENE INFORMATION

Gene Name [PROM1 prominin 1 \[Homo sapiens \]](#)

Official Symbol [PROM1](#)

Synonyms PROM1; prominin 1; macular dystrophy, retinal 2 , MCDR2, prominin (mouse) like 1 , PROML1, Stargardt disease 4 (autosomal dominant) , STGD4; prominin-1; AC133; CD133; RP41; hProminin; antigen AC133; prominin-like protein 1; hematopoietic stem cell antigen; MCDR2; STGD4; CORD12; PROML1; MSTP061;

Gene ID [8842](#)

mRNA Refseq [NM_001145847](#)

Protein Refseq [NP_001139319](#)

MIM [604365](#)

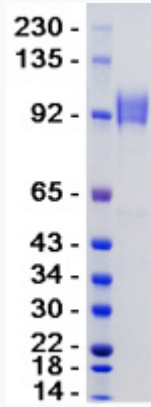
UniProt ID [O43490](#)

 Tel: 1-631-559-9269 1-516-512-3133

 Email: info@creative-biomart.com  Fax: 1-631-938-8127

 45-1 Ramsey Road, Shirley, NY 11967, USA

SDS-PAGE



 Tel: 1-631-559-9269 1-516-512-3133

 Email: info@creative-biomart.com  Fax: 1-631-938-8127

 45-1 Ramsey Road, Shirley, NY 11967, USA