

Recombinant Human PROM2 Protein, Myc/DDK-tagged, C13 and N15-labeled

Cat. No. PROM2-1806H **Lot. No.** (See product label)

SPECIFICATION

Product Overview

PROM2 MS Standard C13 and N15-labeled recombinant protein (NP_653308) with a C-terminal MYC/DDK tag, was expressed in HEK293 cells.

Species

Human

Source

HEK293

Description

This gene encodes a member of the prominin family of pentaspan membrane glycoproteins. The encoded protein localizes to basal epithelial cells and may be involved in the organization of plasma membrane microdomains. Alternative splicing results in multiple transcript variants.

Molecular Mass

91.7 kDa

AA Sequence

MKHTLALLAPLLGLGLGLALSQLAAGATDCKFLGPAEHLTFTPAARARWLAPRVRAP
 GLLDSLYGTVRRFLSVVQLNPFPSSELVKALLNELASVKVNEVVRYEAGYVCAVIAGL
 YLLLVP TAGLCFCCCRCHRRCGGRVKTEHKALACERAALMVLLLLTLLLLLIGVVCAF
 VTNQRTHEQMGPSIEAMPETLLSLWGLVSDVPQELQAVAQQFSLPQE QVSEELD G
 VGVSIGSAIHTQLRSSVYPLLA AVGSLGQVLQVSVHHLQTLNATVVELQAGQQDLEP
 AIREHRDRLELLQEARCQGDCAGALSWARTLELGADFSQVPSVDHVLHQLKGVPE
 ANFSSMVQEENSTFNALPALAAMQTSSVVQELKKAVAQQPEGVRTLAEGFPGLEAA
 SRWAQALQEVEESSRPYLQEVQRYETYRWIVGCVLCSVVLFFVLCNLLGLNLGIWG
 LSARDDPSHPEAKGEAGARFLMAGVGLSFLFAAPLILLVFATFLVGGNVQTLVCRSW

 Tel: 1-631-559-9269 1-516-512-3133

 Email: info@creative-biomart.com  Fax: 1-631-938-8127

 45-1 Ramsey Road, Shirley, NY 11967, USA

ENGELFEFADTPGNLPPSMNLSQLLGLRKNISIHQAYQQCKEGAALWTVLQLNDSY
 DLEEHLINQYTNKLRQELQSLKVDTSQSLDLLSSAARRDLEALQSSGLQRIHYPDFLV
 QIQRPVVKTSMEQLAQELQGLAQADNSVLGQRLQEEAQGLRNHMQEKVVPQQSL
 VAKLNLSVRALESSAPNLQLETSDVLANVTYKLGELPAWAARILRNVSECFLAREMG
 YFSQYVAWVREEVTQRIATCQPLSGALDNSRVILCDMMADPWNAFWFCLAWCTFF
 LIPSIIFAVKTSKYFRPIRKRLSSTSSEETQLFHIPRVTSKLRTRTRPLEQKLISEEDLAA
 NDILDYKDDDDKV

Purity > 80% as determined by SDS-PAGE and Coomassie blue staining

Stability Stable for 3 months from receipt of products under proper storage and handling conditions.

Storage Store at -80 centigrade. Avoid repeated freeze-thaw cycles.

Concentration 50 µg/mL as determined by BCA

Storage Buffer 100 mM glycine, 25 mM Tris-HCl, pH 7.3.

GENE INFORMATION

Gene Name [PROM2 prominin 2 \[Homo sapiens \(human\) \]](#)

Official Symbol [PROM2](#)

Synonyms PROM2; prominin 2; prominin-2; hPROML2; prominin-like protein 2; prominin-related protein; PROML2; MGC138714;

Gene ID [150696](#)

mRNA Refseq [NM_144707](#)

 Tel: 1-631-559-9269 1-516-512-3133

 Email: info@creative-biomart.com  Fax: 1-631-938-8127

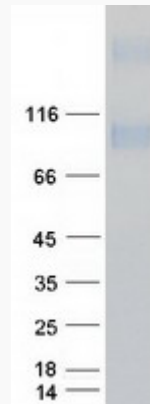
 45-1 Ramsey Road, Shirley, NY 11967, USA

Protein Refseq NP_653308

MIM 617160

UniProt ID Q8N271

SDS-PAGE



 Tel: 1-631-559-9269 1-516-512-3133

 Email: info@creative-biomart.com  Fax: 1-631-938-8127

 45-1 Ramsey Road, Shirley, NY 11967, USA