

Recombinant Human PROM2 protein, His-SUMO-tagged

Cat. No. PROM2-5733H Lot. No. (See product label)

SPECIFICATION

Product Overview	Recombinant Human PROM2 protein(Q8N271)(27-106aa), fused with N-terminal His and SUMO tag, was expressed in E.coli.
Species	Human
Source	E.coli
ProteinLength	27-106aa
Form	If the delivery form is liquid, the default storage buffer is Tris/PBS-based buffer, 5%-50% glycerol. If the delivery form is lyophilized powder, the buffer before lyophilization is Tris/PBS-based buffer, 6% Trehalose, pH 8.0.
Molecular Mass	21.8 kDa
Purity	Greater than 90% as determined by SDS-PAGE.
Storage	Store at -20°C/-80°C upon receipt, aliquoting is necessary for mutiple use. Avoid repeated freeze-thaw cycles.
Reconstitution	We recommend that this vial be briefly centrifuged prior to opening to bring the contents to the bottom. Please reconstitute protein in deionized sterile water to a concentration of 0.1-1.0 mg/mL. We recommend to add 5-50% of glycerol (final concentration) and aliquot for long-term storage at -20°C/-80°C.

 Tel: 1-631-559-9269 1-516-512-3133

 Email: info@creative-biomart.com  Fax: 1-631-938-8127

 45-1 Ramsey Road, Shirley, NY 11967, USA

AA Sequence ATDCKFLGPAEHLTFTPAARARWLAPRVRAPGLLDSLYGTVRRFLSVVQLNPPFSEL
VKALLNELASVKVNEVVRYEAGY

GENE INFORMATION

Gene Name PROM2 prominin 2 [Homo sapiens]

Official Symbol PROM2

Synonyms PROM2; prominin 2; prominin-2; hPROML2; prominin-like protein 2; prominin-related protein; PROML2; MGC138714;

Gene ID 150696

mRNA Refseq NM_001165977

Protein Refseq NP_001159449

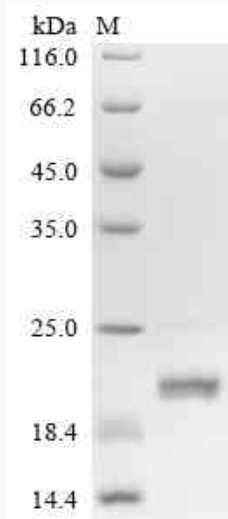
UniProt ID Q8N271

 Tel: 1-631-559-9269 1-516-512-3133

 Email: info@creative-biomart.com  Fax: 1-631-938-8127

 45-1 Ramsey Road, Shirley, NY 11967, USA

SDS-PAGE



 Tel: 1-631-559-9269 1-516-512-3133

 Email: info@creative-biomart.com  Fax: 1-631-938-8127

 45-1 Ramsey Road, Shirley, NY 11967, USA