

## Recombinant Human PROX1 Protein, His-tagged

Cat. No. PROX1-30H Lot. No. (See product label)

### SPECIFICATION

<b>Product Overview</b>	Purified recombinant protein of Human prospero homeobox 1 (PROX1), His400-End, with N-terminal His tag was expressed in E. coli.
<b>Species</b>	Human
<b>Source</b>	E.coli
<b>ProteinLength</b>	400-end a.a.
<b>Description</b>	<p>The protein encoded by this gene is a member of the homeobox transcription factor family. Members of this family contain a homeobox domain that consists of a 60-amino acid helix-turn-helix structure that binds DNA and RNA. The protein encoded by this gene is conserved across vertebrates and may play an essential role during development. Altered levels of this protein have been reported in cancers of different organs, such as colon, brain, blood, breast, pancreas, liver and esophagus. Alternative splicing results in multiple transcript variants.</p>
<b>Molecular Mass</b>	38 kDa
<b>Purity</b>	> 80% as determined by SDS-PAGE and Coomassie blue staining
<b>Stability</b>	Stable for 12 months from the date of receipt of the product under proper storage and handling conditions. Avoid repeated freeze-thaw cycles.
<b>Storage</b>	Store at -80 centigrade.

 Tel: 1-631-559-9269 1-516-512-3133

 Email: [info@creative-biomart.com](mailto:info@creative-biomart.com)  Fax: 1-631-938-8127

 45-1 Ramsey Road, Shirley, NY 11967, USA

**Concentration** >50 µg/mL as determined by microplate BCA method

**Storage Buffer** 50 mM Tris, 8 M Urea, pH 8.0.

## GENE INFORMATION

**Gene Name** PROX1 prospero homeobox 1 [ Homo sapiens (human) ]

**Official Symbol** PROX1

**Synonyms** PROX1; prospero homeobox 1; prospero homeobox protein 1; homeobox prospero-like protein PROX1; prospero-related homeobox 1

**Gene ID** 5629

**mRNA Refseq** NM\_002763

**Protein Refseq** NP\_002754

**MIM** 601546

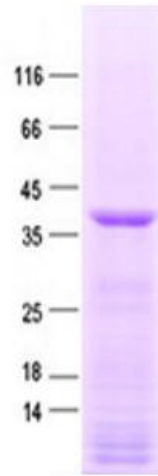
**UniProt ID** Q92786

 Tel: 1-631-559-9269 1-516-512-3133

 Email: [info@creative-biomart.com](mailto:info@creative-biomart.com)  Fax: 1-631-938-8127

 45-1 Ramsey Road, Shirley, NY 11967, USA

**SDS-PAGE**



 Tel: 1-631-559-9269 1-516-512-3133

 Email: [info@creative-biomart.com](mailto:info@creative-biomart.com)  Fax: 1-631-938-8127

 45-1 Ramsey Road, Shirley, NY 11967, USA