

Recombinant Human PRPS2 Protein (Pro2-Leu318), C-His tagged

Cat. No. PRPS2-6013H Lot. No. (See product label)

SPECIFICATION

Product Overview	Recombinant human PRPS2 (Pro2-Leu318) fused with the C-terminal His tag was expressed in mammalian cells.
Species	Human
Source	Mammalian Cells
ProteinLength	Pro2-Leu318
Form	Lyophilized powder/frozen liquid
Molecular Mass	34.87 kDa
Purity	> 90 % as determined by SDS-PAGE
Notes	For research use only.
Storage	Use a manual defrost freezer and avoid repeated freeze thaw cycles. Store at 2 to 8 centigrade for one week. Store at -20 to -80 centigrade for twelve months from the date of receipt.
Storage Buffer	Supplied as solution form in PBS or lyophilized from PBS.
Reconstitution	Reconstitute in sterile water for a stock solution.

 Tel: 1-631-559-9269 1-516-512-3133

 Email: info@creative-biomart.com  Fax: 1-631-938-8127

 45-1 Ramsey Road, Shirley, NY 11967, USA

Shipping They are shipped out with dry ice/blue ice unless customers require otherwise.

GENE INFORMATION

Gene Name [PRPS2 phosphoribosyl pyrophosphate synthetase 2 \[Homo sapiens \(human\) \]](#)

Official Symbol [PRPS2](#)

Synonyms PRPS2; phosphoribosyl pyrophosphate synthetase 2; ribose-phosphate pyrophosphokinase 2; PRS II; ribose phosphate diphosphokinase 2; PRS-II; PPRibP synthetase; ribose-phosphate diphosphokinase 2; phosphoribosyl pyrophosphate synthase II; PRSII;

Gene ID [5634](#)

mRNA Refseq [NM_001039091](#)

Protein Refseq [NP_001034180](#)

MIM [311860](#)

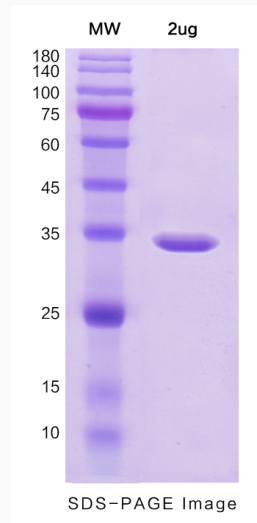
UniProt ID [P11908](#)

 Tel: 1-631-559-9269 1-516-512-3133

 Email: info@creative-biomart.com  Fax: 1-631-938-8127

 45-1 Ramsey Road, Shirley, NY 11967, USA

SDS-PAGE



 Tel: 1-631-559-9269 1-516-512-3133

 Email: info@creative-biomart.com  Fax: 1-631-938-8127

 45-1 Ramsey Road, Shirley, NY 11967, USA