

# Recombinant Human PRPSAP2 Protein, Myc/DDK-tagged, C13 and N15-labeled

**Cat. No.** PRPSAP2-547H    **Lot. No.** (See product label)

## SPECIFICATION

<b>Product Overview</b>	PRPSAP2 MS Standard C13 and N15-labeled recombinant protein (NP_002758) with a C-terminal MYC/DDK tag, was expressed in HEK293 cells.
<b>Species</b>	Human
<b>Source</b>	HEK293
<b>Description</b>	This gene encodes a protein that associates with the enzyme phosphoribosylpyrophosphate synthetase (PRS). PRS catalyzes the formation of phosphoribosylpyrophosphate which is a substrate for synthesis of purine and pyrimidine nucleotides, histidine, tryptophan and NAD. PRS exists as a complex with two catalytic subunits and two associated subunits. This gene encodes a non-catalytic associated subunit of PRS. Alternate splicing results in multiple transcript variants.
<b>Molecular Mass</b>	40.9 kDa
<b>AA Sequence</b>	MFCVTPPELETKMNITKGGLVLFSA NSNSSCMELSKKIAERLGVEMGKVQVYQEPN RETRVQIQESVRGKDVFIQTVSKDVNTTIMELLIMVYACKTSCAKSIIGVIPYFPYSKQ CKMRKRGSIVSKLLASMMCKAGLTHLITMDLHQKEIQGFFNIPVDNLRASPFLQYIQ EEIPDYRNAVIVAKSPASAKRAQSFAERLRLGIAVIHGEAQDAESDLVDGRHSPPMV RSVAAIHP SLEIPMLIPKEKPPITVVG DVGGRIAIIVDDIIDDVDSFLAAAETLKERGAYKI FVMATHGLLSSDAPRRIEESAIDEVVVTNTIPHEVQKLQCPKIKTVDISMILSEAIRRIH

 Tel: 1-631-559-9269    1-516-512-3133

 Email: [info@creative-biomart.com](mailto:info@creative-biomart.com)     Fax: 1-631-938-8127

 45-1 Ramsey Road, Shirley, NY 11967, USA

NGESMSYLFNRNIGLDDTRTRPLEQKLISEEDLAANDILDYKDDDDKV

**Purity** > 80% as determined by SDS-PAGE and Coomassie blue staining

**Stability** Stable for 3 months from receipt of products under proper storage and handling conditions.

**Storage** Store at -80 centigrade. Avoid repeated freeze-thaw cycles.

**Concentration** 50 µg/mL as determined by BCA

**Storage Buffer** 100 mM glycine, 25 mM Tris-HCl, pH 7.3.

## GENE INFORMATION

**Gene Name** [PRPSAP2 phosphoribosyl pyrophosphate synthetase-associated protein 2 \[ Homo sapiens \(human\) \]](#)

**Official Symbol** [PRPSAP2](#)

**Synonyms** PRPSAP2; phosphoribosyl pyrophosphate synthetase-associated protein 2; phosphoribosyl pyrophosphate synthase-associated protein 2; PAP41; PRPP synthase-associated protein 2; 41 kDa phosphoribosypyrophosphate synthetase-associated protein; MGC117304; MGC126719; MGC126721;

**Gene ID** [5636](#)

**mRNA Refseq** [NM\\_002767](#)

**Protein Refseq** [NP\\_002758](#)

 Tel: 1-631-559-9269 1-516-512-3133

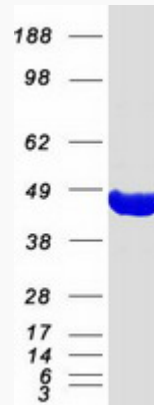
 Email: [info@creative-biomart.com](mailto:info@creative-biomart.com)  Fax: 1-631-938-8127

 45-1 Ramsey Road, Shirley, NY 11967, USA

MIM 603762

UniProt ID O60256

SDS-PAGE



 Tel: 1-631-559-9269 1-516-512-3133

 Email: [info@creative-biomart.com](mailto:info@creative-biomart.com)  Fax: 1-631-938-8127

 45-1 Ramsey Road, Shirley, NY 11967, USA