

Recombinant Human PRR16 Protein, GST-tagged

Cat. No. PRR16-4772H Lot. No. (See product label)

SPECIFICATION

Product Overview	Human LOC51334 full-length ORF (AAH38838.1, 1 a.a. - 234 a.a.) recombinant protein with GST-tag at N-terminal.
Species	Human
Source	Wheat Germ
Description	PRR16 (Proline Rich 16) is a Protein Coding gene. Diseases associated with PRR16 include Autosomal Recessive Nonsyndromic Deafness 3.
Molecular Mass	51.48 kDa
AA Sequence	MTDSSKTDLNSSSSGTTASSLEKIKVQANAPLIKPPAHTSAILTVLRKPNPPPPPRRL TPVKCEDPKRVVPTANPVKTNGTLLRNGGLPGGPNKIPNGDICCIPNSNLDKAPVQL LMHRPEKDRCPQAGPRERVRFNEKVQYHGYCPDCDTRYNIKNREVHLHSEPVHPP GKIPHQGPPLPPTPHLPPFPLENGGMGISHSNSFPPIRPATVPPPTAPKPQKTILRKS TTTTV
Applications	Enzyme-linked Immunoabsorbent Assay Western Blot (Recombinant protein) Antibody Production Protein Array
Notes	Best use within three months from the date of receipt of this protein.

 Tel: 1-631-559-9269 1-516-512-3133

 Email: info@creative-biomart.com  Fax: 1-631-938-8127

 45-1 Ramsey Road, Shirley, NY 11967, USA

Storage Store at -80 centigrade. Aliquot to avoid repeated freezing and thawing.

Storage Buffer 50 mM Tris-HCl, 10 mM reduced Glutathione, pH=8.0 in the elution buffer.

GENE INFORMATION

Gene Name PRR16 proline rich 16 [Homo sapiens (human)]

Official Symbol PRR16

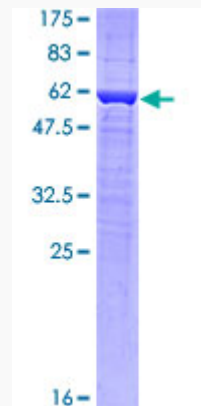
Synonyms PRR16; proline rich 16; DSC54; LARGEN; protein Largen; proline-rich protein 16

Gene ID 51334

mRNA Refseq NM_001081224

Protein Refseq NP_001074693

Quality Control Testing



12.5% SDS-PAGE Stained with Coomassie Blue

 Tel: 1-631-559-9269 1-516-512-3133

 Email: info@creative-biomart.com  Fax: 1-631-938-8127

 45-1 Ramsey Road, Shirley, NY 11967, USA