

## Recombinant Human PRRC2A protein, GST-tagged

Cat. No. PRRC2A-084H Lot. No. (See product label)

### SPECIFICATION

<b>Product Overview</b>	Human PRRC2A partial ORF ( NP_004629.2, 2046 a.a. - 2145 a.a.) recombinant protein with GST-tag at N-terminal.
<b>Species</b>	Human
<b>Source</b>	Wheat Germ
<b>Description</b>	A cluster of genes, BAT1-BAT5, has been localized in the vicinity of the genes for TNF alpha and TNF beta. These genes are all within the human major histocompatibility complex class III region. This gene has microsatellite repeats which are associated with the age-at-onset of insulin-dependent diabetes mellitus (IDDM) and possibly thought to be involved with the inflammatory process of pancreatic beta-cell destruction during the development of IDDM. This gene is also a candidate gene for the development of rheumatoid arthritis. [provided by RefSeq]
<b>Form</b>	50 mM Tris-HCl, 10 mM reduced Glutathione, pH=8.0 in the elution buffer.
<b>Molecular Mass</b>	36.74 kDa
<b>AA Sequence</b>	FQDYQKLSSNLGGPGSSRTPPTGRSFSGLNSRLKATPSTYSGVFRTQRVDLYQQA SPPDALRWIPKPWERTGLPPREGPSRRAEEPGSRGDKEPGLPPPR
<b>Notes</b>	Best use within three months from the date of receipt of this protein.
<b>Storage</b>	Store at -80 centigrade. Aliquot to avoid repeated freezing and thawing.

 Tel: 1-631-559-9269 1-516-512-3133

 Email: [info@creative-biomart.com](mailto:info@creative-biomart.com)  Fax: 1-631-938-8127

 45-1 Ramsey Road, Shirley, NY 11967, USA

**Storage Buffer** 50 mM Tris-HCl, 10 mM reduced Glutathione, pH=8.0 in the elution buffer.

## GENE INFORMATION

**Gene Name** PRRC2A proline-rich coiled-coil 2A [ Homo sapiens ]

**Official Symbol** PRRC2A

**Synonyms** G2; BAT2; D6S51; D6S51E

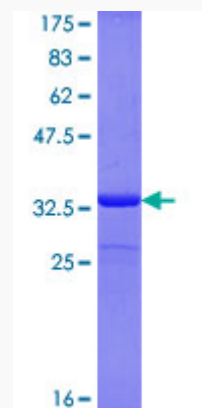
**Gene ID** 7916

**mRNA Refseq** NM\_080686.2

**Protein Refseq** NP\_542417.2

**MIM** 142580

**UniProt ID** P48634



 Tel: 1-631-559-9269 1-516-512-3133

 Email: [info@creative-biomart.com](mailto:info@creative-biomart.com)  Fax: 1-631-938-8127

 45-1 Ramsey Road, Shirley, NY 11967, USA