

# Recombinant Human PRRT4 Protein, Myc/DDK-tagged, C13 and N15-labeled

Cat. No. PRRT4-3457H Lot. No. (See product label)

## SPECIFICATION

<b>Product Overview</b>	PRRT4 MS Standard C13 and N15-labeled recombinant protein (NP_001108198) with a C-terminal MYC/DDK tag, was expressed in HEK293 cells.
<b>Species</b>	Human
<b>Source</b>	HEK293
<b>Description</b>	PRRT4 (Proline Rich Transmembrane Protein 4) is a Protein Coding gene. Diseases associated with PRRT4 include Zellweger Syndrome.
<b>Molecular Mass</b>	44.4 kDa
<b>AA Sequence</b>	MARHGCLGLGLFCCVLF AATVGPQPTPSIPGAPATTLTPVPQSEASMLSLNLGLNFK FHLRGPAAVWGGSPVTETQPLSLGPGQEPGEEVASGLRTDPLWELLVGSSGNSLTE WGSTEGGSKPRASSLLPESTSRRSGPSDGPTAPYQPRRSTVTWDTALMVTALPSS APRPHQSELELKFDMALRAGAAPT LGHRTLPLLPSLRASLAEIAGRLGPF GFFGTTLS PLRNFSGLSPPGETTSTSSASGVSGSLGFLGTTLSLPPYSLERKLSSPSPLDPAASL SFASIATTS LDPTVPISGPDDLSPASLG NPSGQPECGPGSCSVGELPEREQPPEA PRPLFFLTLEADWAEARARWGLAWEAHVYGR LHRGLPPALPNQPATQHRGGPLQR GPACAWPLPGPCLRGRSAWARTLPHRLAGDRGQGQTRTRPLEQKLISEEDLAANDI LDYKDDDDKV
<b>Purity</b>	> 80% as determined by SDS-PAGE and Coomassie blue staining

 Tel: 1-631-559-9269 1-516-512-3133

 Email: [info@creative-biomart.com](mailto:info@creative-biomart.com)  Fax: 1-631-938-8127

 45-1 Ramsey Road, Shirley, NY 11967, USA

<b>Stability</b>	Stable for 3 months from receipt of products under proper storage and handling conditions.
<b>Storage</b>	Store at -80 centigrade. Avoid repeated freeze-thaw cycles.
<b>Concentration</b>	50 µg/mL as determined by BCA
<b>Storage Buffer</b>	100 mM glycine, 25 mM Tris-HCl, pH 7.3.

## GENE INFORMATION

<b>Gene Name</b>	PRRT4 proline rich transmembrane protein 4 [ Homo sapiens (human) ]
<b>Official Symbol</b>	PRRT4
<b>Synonyms</b>	PRRT4; proline rich transmembrane protein 4; proline-rich transmembrane protein 4
<b>Gene ID</b>	401399
<b>mRNA Refseq</b>	NM_001114726
<b>Protein Refseq</b>	NP_001108198
<b>UniProt ID</b>	C9JH25

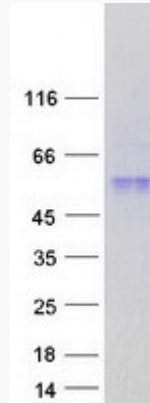
 Tel: 1-631-559-9269 1-516-512-3133

 Email: [info@creative-biomart.com](mailto:info@creative-biomart.com)  Fax: 1-631-938-8127

 45-1 Ramsey Road, Shirley, NY 11967, USA



SDS-PAGE



Tel: 1-631-559-9269 1-516-512-3133

Email: [info@creative-biomart.com](mailto:info@creative-biomart.com) Fax: 1-631-938-8127

45-1 Ramsey Road, Shirley, NY 11967, USA