

Recombinant Human PRSS1 protein, His-tagged

Cat. No. PRSS1-5433H Lot. No. (See product label)

SPECIFICATION

Product Overview	Recombinant Human PRSS1 protein(P07477)(24-247aa), fused with C-terminal His tag, was expressed in Yeast.
Species	Human
Source	Yeast
ProteinLength	24-247aa
Tag	C-His
Form	If the delivery form is liquid, the default storage buffer is Tris/PBS-based buffer, 5%-50% glycerol. If the delivery form is lyophilized powder, the buffer before lyophilization is Tris/PBS-based buffer, 6% Trehalose, pH 8.0.
Molecular Mass	25.6 kDa
Purity	Greater than 90% as determined by SDS-PAGE.
Storage	Store at -20°C/-80°C upon receipt, aliquoting is necessary for mutiple use. Avoid repeated freeze-thaw cycles.
Reconstitution	We recommend that this vial be briefly centrifuged prior to opening to bring the contents to the bottom. Please reconstitute protein in deionized sterile water to a concentration of 0.1-1.0 mg/mL. We recommend to add 5-50% of glycerol (final

 Tel: 1-631-559-9269 1-516-512-3133

 Email: info@creative-biomart.com  Fax: 1-631-938-8127

 45-1 Ramsey Road, Shirley, NY 11967, USA

concentration) and aliquot for long-term storage at -20°C/-80°C.

AA Sequence

IVGGYNCEENSVPYQVSLNSGYHFCGGSLINEQWVVSAGHCYKSRIQVRLGEHNIE
 VLEGNEQFINAAKIIRHPQYDRKTLNNDIMLIKLSRAVINARVSTISLPTAPPATGTKC
 LISGWGNTASSGADYPDELQCLDAPVLSQAKCEASYPGKITSNMFCVGFLEGGKDS
 CQGDSGGPVVCNGQLQGVSWSGDGCAQKNKPGVYTKVYNYVKWIKNTIAANS

GENE INFORMATION

Gene Name [PRSS1 protease, serine, 1 \(trypsin 1\) \[Homo sapiens \]](#)

Official Symbol [PRSS1](#)

Synonyms PRSS1; protease, serine, 1 (trypsin 1); TRY1; trypsin-1; beta-trypsin; trypsinogen 1; trypsinogen A; digestive zymogen; cationic trypsinogen; nonfunctional trypsin 1; TRP1; TRY4; TRYP1; FLJ57296; MGC120175; MGC149362; DKFZp779A0837;

Gene ID [5644](#)

mRNA Refseq [NM_002769](#)

Protein Refseq [NP_002760](#)

MIM [276000](#)

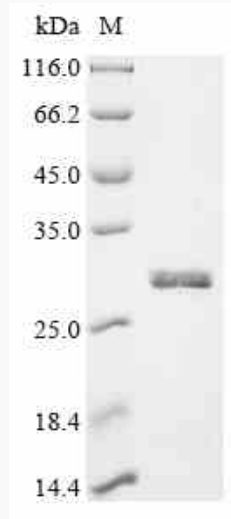
UniProt ID [P07477](#)

 Tel: 1-631-559-9269 1-516-512-3133

 Email: info@creative-biomart.com  Fax: 1-631-938-8127

 45-1 Ramsey Road, Shirley, NY 11967, USA

SDS-PAGE



 Tel: 1-631-559-9269 1-516-512-3133

 Email: info@creative-biomart.com  Fax: 1-631-938-8127

 45-1 Ramsey Road, Shirley, NY 11967, USA