

Recombinant Human PRSS1 Protein (Ala16-Ser247), C-His and Fc tagged

Cat. No. PRSS1-6015H Lot. No. (See product label)

SPECIFICATION

Product Overview	Recombinant human PRSS1 (Ala16-Ser247) fused with the C-terminal His and Fc tag was expressed in mammalian cells.
Species	Human
Source	Mammalian Cells
ProteinLength	Ala16-Ser247
Form	Lyophilized powder/frozen liquid
Molecular Mass	50.52 kDa
Purity	> 90 % as determined by SDS-PAGE
Notes	For research use only.
Storage	Use a manual defrost freezer and avoid repeated freeze thaw cycles. Store at 2 to 8 centigrade for one week. Store at -20 to -80 centigrade for twelve months from the date of receipt.
Storage Buffer	Supplied as solution form in PBS or lyophilized from PBS.
Reconstitution	Reconstitute in sterile water for a stock solution.

 Tel: 1-631-559-9269 1-516-512-3133

 Email: info@creative-biomart.com  Fax: 1-631-938-8127

 45-1 Ramsey Road, Shirley, NY 11967, USA

Shipping They are shipped out with dry ice/blue ice unless customers require otherwise.

GENE INFORMATION

Gene Name [PRSS1 protease, serine, 1 \(trypsin 1\) \[Homo sapiens \(human\) \]](#)

Official Symbol [PRSS1](#)

Synonyms PRSS1; protease, serine, 1 (trypsin 1); TRY1; trypsin-1; beta-trypsin; trypsinogen 1; trypsinogen A; digestive zymogen; cationic trypsinogen; nonfunctional trypsin 1; TRP1; TRY4; TRYP1; FLJ57296; MGC120175; MGC149362; DKFZp779A0837;

Gene ID [5644](#)

mRNA Refseq [NM_002769](#)

Protein Refseq [NP_002760](#)

MIM [276000](#)

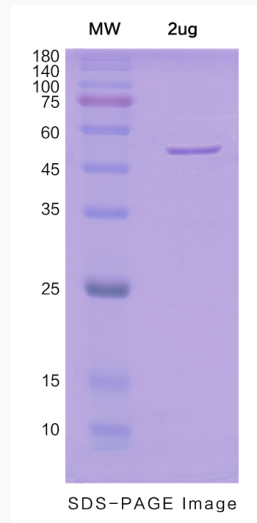
UniProt ID [P07477](#)

 Tel: 1-631-559-9269 1-516-512-3133

 Email: info@creative-biomart.com  Fax: 1-631-938-8127

 45-1 Ramsey Road, Shirley, NY 11967, USA

SDS-PAGE



 Tel: 1-631-559-9269 1-516-512-3133

 Email: info@creative-biomart.com  Fax: 1-631-938-8127

 45-1 Ramsey Road, Shirley, NY 11967, USA