

Recombinant Human PRSS12 Protein (631-874 aa), His-SUMO-tagged

Cat. No. PRSS12-1893H Lot. No. (See product label)

SPECIFICATION

Product Overview	Recombinant Human PRSS12 Protein (631-874 aa) is produced by E. coli expression system. This protein is fused with a 6xHis-SUMO tag at the N-terminal. Research Area: Cell Biology. Protein Description: Partial.
Species	Human
Source	E.coli
ProteinLength	631-874 aa
Description	Plays a role in neuronal plasticity and the proteolytic action may subserve structural reorganizations associated with learning and memory operations.
Form	Tris-based buffer,50% glycerol
Molecular Mass	43.4 kDa
AA Sequence	IIGGKNSLRGGWPWQVSLRLKSSHGDGRLLCGATLLSSCWVLTAAHCFKRYGNSTR SYAVRVGDYHTLVPEEFEEEEIGVQQQIVHREYRPDRSDYDIALVRLQGPEEQCARFS SHVLPACLPLWRERPQKTASNCYITGWGDTGRAYSRTLQQAIIPLLPKRFCEERYK GRFTGRMLCAGNLHEHKRVDSQCQGDSSGGLMCPGESWVVYGVTSWGYGCGV KDSPGVYTKVSAFVPWIKSVTK
Purity	> 90% as determined by SDS-PAGE.

 Tel: 1-631-559-9269 1-516-512-3133

 Email: info@creative-biomart.com  Fax: 1-631-938-8127

 45-1 Ramsey Road, Shirley, NY 11967, USA

Notes	Repeated freezing and thawing is not recommended. Store working aliquots at 4 centigrade for up to one week.
Storage	The shelf life is related to many factors, storage state, buffer ingredients, storage temperature and the stability of the protein itself. Generally, the shelf life of liquid form is 6 months at -20 centigrade/-80 centigrade. The shelf life of lyophilized form is 12 months at -20 centigrade/-80 centigrade.
Concentration	A hardcopy of COA with reconstitution instruction is sent along with the products.

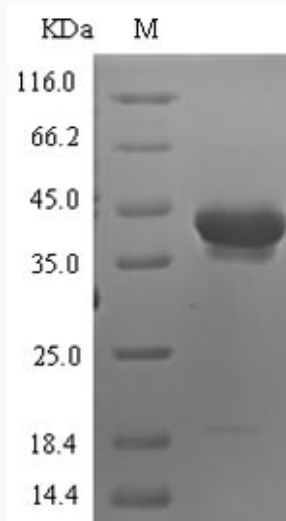
GENE INFORMATION

Gene Name	PRSS12 protease, serine, 12 (neurotrypsin, motopsin) [Homo sapiens]
Official Symbol	PRSS12
Synonyms	PRSS12; neurotrypsin; BSSP 3; MRT1; leydin; BSSP3; BSSP-3; MGC12722;
Gene ID	8492
mRNA Refseq	NM_003619
Protein Refseq	NP_003610
MIM	606709
UniProt ID	P56730

 Tel: 1-631-559-9269 1-516-512-3133

 Email: info@creative-biomart.com  Fax: 1-631-938-8127

 45-1 Ramsey Road, Shirley, NY 11967, USA



(Tris-Glycine gel) Discontinuous SDS-PAGE (reduced) with 5% enrichment gel and 15% separation gel.

 Tel: 1-631-559-9269 1-516-512-3133

 Email: info@creative-biomart.com  Fax: 1-631-938-8127

 45-1 Ramsey Road, Shirley, NY 11967, USA