

Recombinant Human PRSS12 protein, His & T7-tagged

Cat. No. PRSS12-6906H Lot. No. (See product label)

SPECIFICATION

Product Overview	Recombinant Human PRSS12 aa. (Glu17~Ser235 (Accession # P56730)) fused with N-terminal His & T7 tag was produced in E. coli cells.
Species	Human
Source	E.coli
ProteinLength	Glu17~Ser235
Description	This gene encodes a member of the trypsin family of serine proteases. Studies in mouse suggest that the encoded enzyme may be involved in structural reorganizations associated with learning and memory. The enzyme is also expressed in Leydig cells in the testis, but its function in this tissue is unknown. Defects in this gene are a cause of mental retardation autosomal recessive type 1 (MRT1).
Form	Freeze-dried powder
Molecular Mass	25kDa as determined by SDS-PAGE reducing conditions.
Endotoxin	<1.0EU per 1ug (determined by the LAL method)
Purity	>95%
Characteristic	The isoelectric point is 9.0.

 Tel: 1-631-559-9269 1-516-512-3133

 Email: info@creative-biomart.com  Fax: 1-631-938-8127

 45-1 Ramsey Road, Shirley, NY 11967, USA

Applications	SDS-PAGE; WB; ELISA; IP
Stability	The thermal stability is described by the loss rate. The loss rate was determined by accelerated thermal degradation test, that is, incubate the protein at 37°C for 48h, and no obvious degradation and precipitation were observed. The loss rate is less than 5% within the expiration date under appropriate storage condition.
Storage	Avoid repeated freeze/thaw cycles. Store at 2-8°C for one month. Aliquot and store at -80°C for 12 months.
Storage buffer	Supplied as lyophilized form in PBS, pH7.4, containing 5% trehalose, 0.01% sarcosyl.
Reconstitution	Reconstitute in sterile PBS, pH7.2-pH7.4.

GENE INFORMATION

Gene Name	PRSS12 protease, serine 12 [Homo sapiens (human)]
Official Symbol	PRSS12
Synonyms	PRSS12; protease, serine 12; MRT1; BSSP3; BSSP-3; neurotrypsin; brain-specific serine protease 3; leydin; protease, serine, 12 (neurotrypsin, motopsin)
Gene ID	8492
mRNA Refseq	NM_003619.3
Protein Refseq	NP_003610.2
UniProt ID	P56730

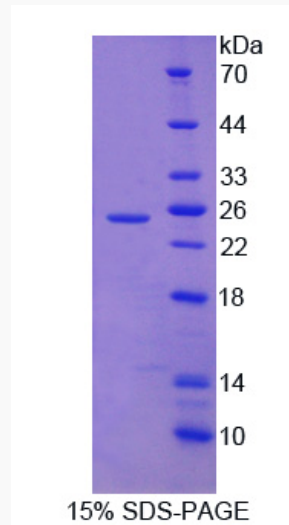
 Tel: 1-631-559-9269 1-516-512-3133

 Email: info@creative-biomart.com  Fax: 1-631-938-8127

 45-1 Ramsey Road, Shirley, NY 11967, USA



SDS-PAGE



Tel: 1-631-559-9269 1-516-512-3133

Email: info@creative-biomart.com Fax: 1-631-938-8127

45-1 Ramsey Road, Shirley, NY 11967, USA